



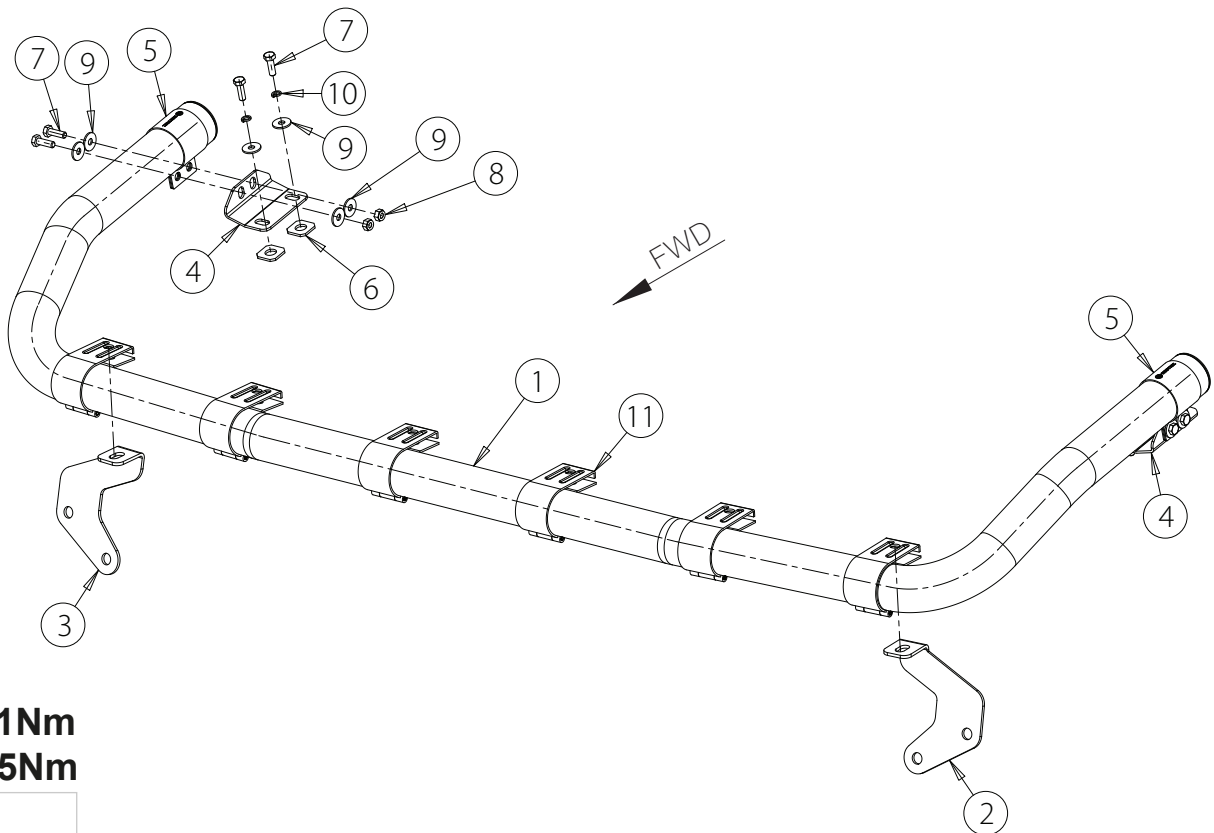
Volvo FH 13- Low roof

Art. 868620, 86862071, 868621, 86862171

Laternakandur Ø60 | lamp holder Ø60 |

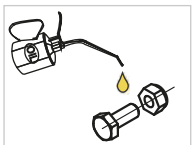


- | | |
|--|----|
| 1. Laternakandur / lampholder / носитель фар | 1 |
| 2. Kronstein / bracket / кронштейн | 1 |
| 3. Kronstein / bracket / кронштейн | 1 |
| 4. Vinkel / angled plate / угольник | 2 |
| 5. Klamber / clamp / клип | 2 |
| 6. Kompensaator / rubber plate / компенсатор | 4 |
| 7. Polt / bolt / болт M8x25 mm | 8 |
| 8. Mutter / nut / гайка M8 DIN 985 | 4 |
| 9. Seib / washer / шайба 8,4x24x2 mm | 12 |
| 10. Vedruseib / spring washer / пружинная шайба A8 | 4 |
| 11. laternaklamber / lamp clamp / зажим для фар | 6 |



M6 - 11Nm

M8 - 25Nm

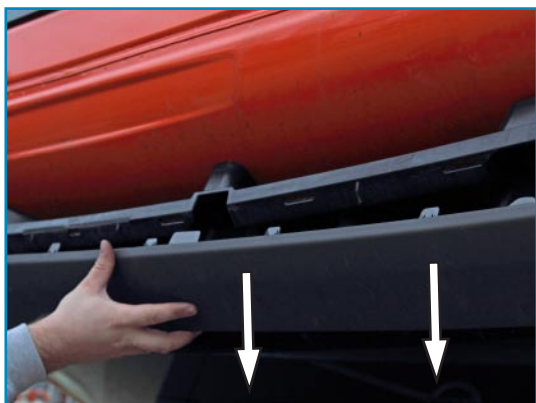


Kaal / Weight / 11,3 kg

Paigaldusaeg / Time of mounting / 45min

Vajalikud tööriistad / Required tools /





Pilt 1 / Pic. 1 / Рис. 1



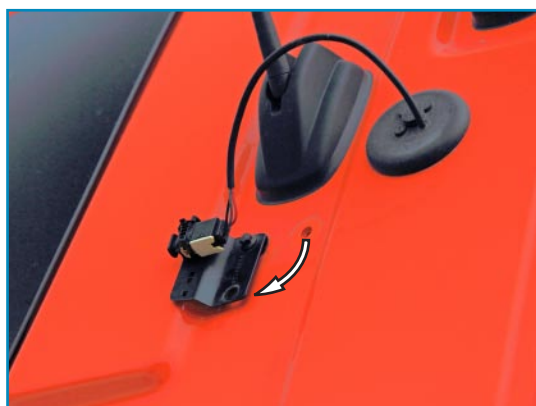
Pilt 2 / Pic. 2 / Рис. 2



Pilt 3 / Pic. 3 / Рис. 3



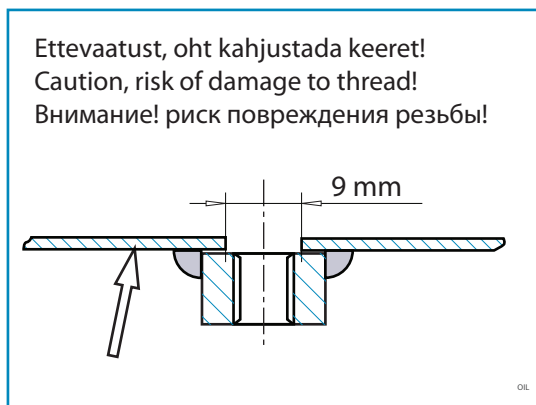
Pilt 4 / Pic. 4 / Рис. 4



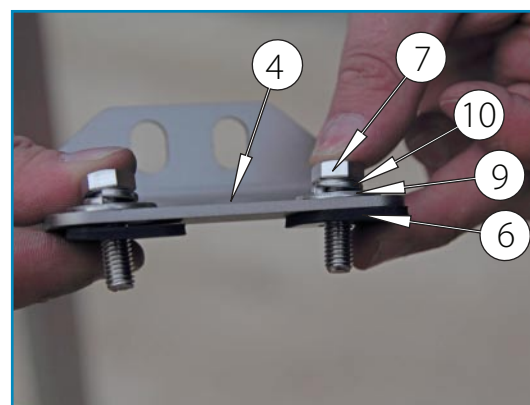
Pilt 5 / Pic. 5 / Рис. 5



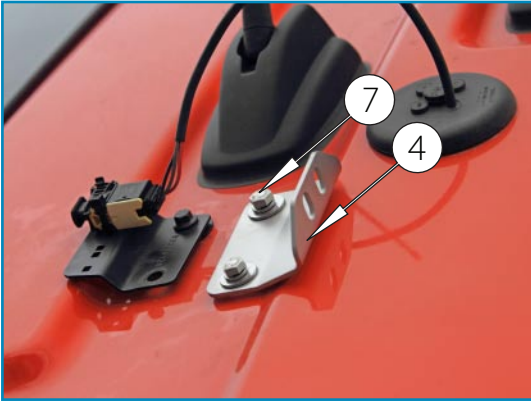
Pilt 6 / Pic. 6 / Рис. 6



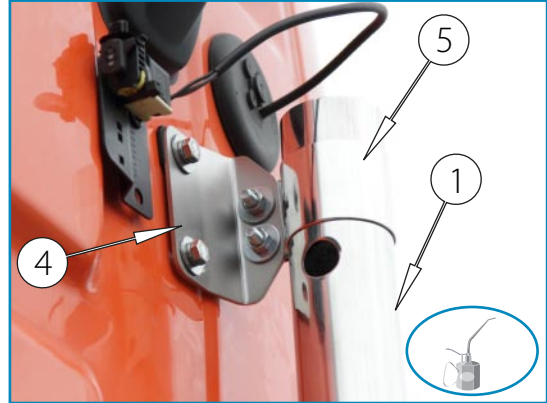
Pilt 7 / Pic. 7 / Рис. 7



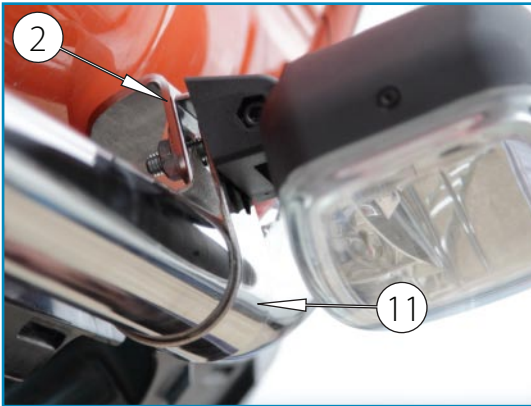
Pilt 8 / Pic. 8 / Рис. 8



Pilt 9 / Pic. 9 / Рис. 9



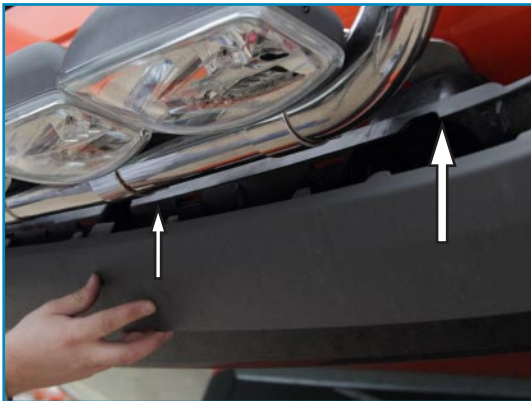
Pilt 10 / Pic. 10 / Рис. 10



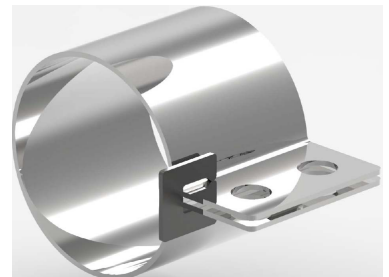
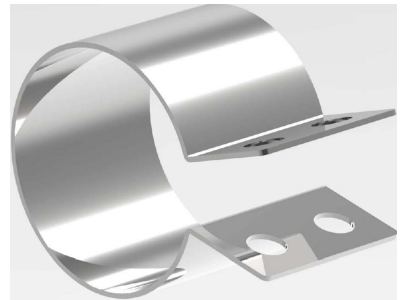
Pilt 11 / Pic. 11 / Рис. 11



Pilt 12 / Pic. 12 / Рис. 12



Pilt 13 / Pic. 13 / Рис. 13



Switching pattern of the lights of the holder with OE connectors for XC117 and XC172 of factory prewiring "SPOT-R" / "SPOT-RF" and "BEACON-P"

Tube mounted Led marker lights "C" (if presented) are connected inside the tube and connected with potential position lights of the extra spot lights.

Juhtmesari võimaldab ühendada:

- B harudele kokku tarbimist kuni 15A

- A harudele kokku tarbimist kuni 15A

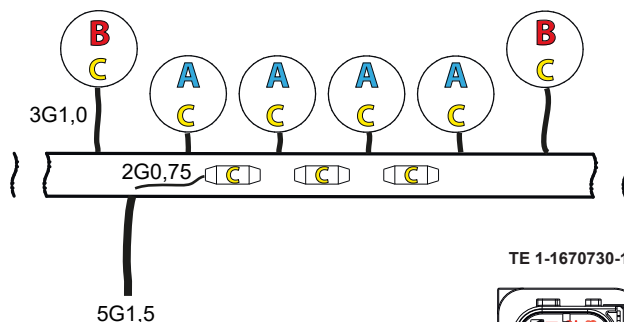
B haru võimaldab kas eraldi lülitust või kogukoormuse jaotamist kaablioste vahel (vajalik juhtmete ümbertõstmise auto pistikus)

Wiring allows to connect:

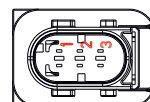
- B looms with gross load of 15A

- A looms with gross load of 15A

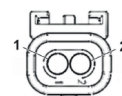
B loom connected either as separate "switch-on" or used to distribute the load between the wires (repositioning wires in the truck can connector)



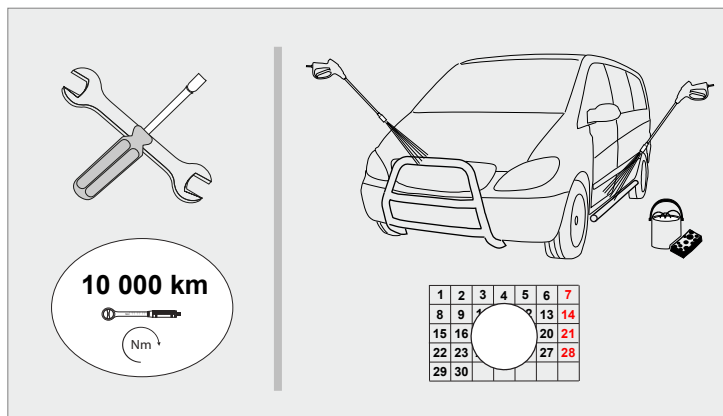
TE 1-1670730-1



Volvo 60114164



switch ON position	cord ID number references					
	5G1,5	3G1,0 A	3G1,0 B	2G0,75	to XC117 1670730-1	to XC172 60114164
yellow +	1	1	1	2	(1) 2	
ground -	Gr/y	Gr/y		1	3	
red +	2		2			1
blue +	3	2			(2) 1	
ground B -	4		Gr/y			2



Elektriühendused teostada kvalifitseeritud autoelektriku poolt

Installation of the lights can be carried out by qualified electrician only

Die Installation der Lichter können durchgeführt werden durch Elektrofachkraft