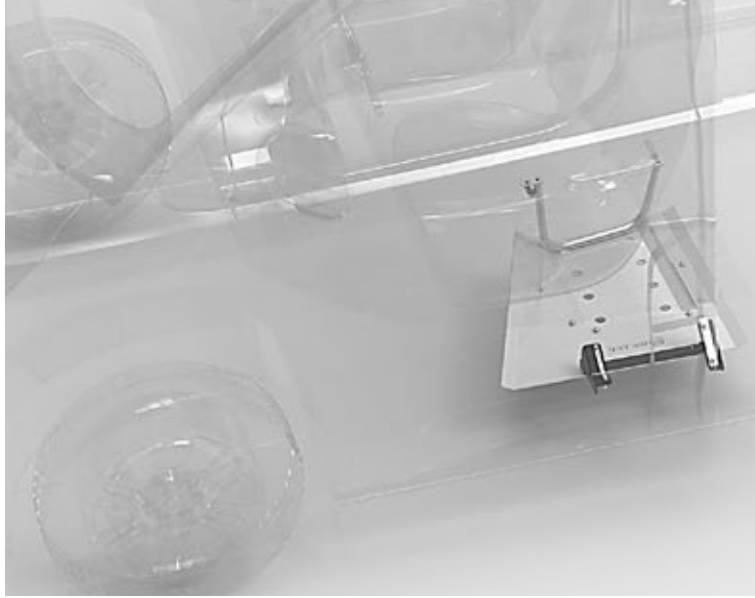




Ford Transit/Tourneo Custom 23- (FWD, AWD)

Art. 807457

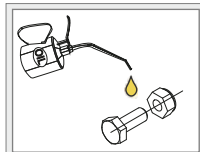
Põhjakaitses AdBlue paagile | Skid plate for AdBlue tank | Unterfahrschutz für AdBlue tank



1. Põhjakaitses / skid plate / Motorschutz	1
2. Põhjakaitses / skid plate / Motorschutz	1
3. Toru / pipe / труба / Rohr 25	1
4. T-polt / T-bolt / T-bolzen	1
5. Lülilik / plate nut / Platte mit mutter	1
6. Kronstein / bracket / Konsole	1
7. Kronstein / bracket / Konsole	1
8. Polt / bolt / Bolzen M6x30 DIN933-galZn	1
9. Polt / bolt / Bolzen M8x25 DIN933-galZn	8
10. Polt / bolt / Bolzen M8x30 DIN7513A-galZn	2
11. Polt / bolt / Bolzen M10x30 DIN933-galZn	4
12. Mutter / nut / Mutter M6 DIN934-galZn	1
13. Mutter / nut / Mutter M8 DIN985-galZn	6
14. Mutter / nut / Mutter M10 DIN934-galZn	1
15. Seib / flat washer / Scheibe 6,4x18x1,6	2
16. Seib / flat washer / Scheibe 8,4x16x1,6	2
17. Seib / flat washer / Scheibe 8,4x24x2	14
18. Seib / flat washer / Scheibe 10,5x30x2,5	5
19. Vedruseib / spring washer / Federnscheibe A6	2
20. Vedruseib / spring washer / Federnscheibe A8	4
21. Vedruseib / spring washer / Federnscheibe A10	4

Zn

M6	-	9,8	Nm
M8	-	24	Nm
M10	-	47	Nm



Külmkeevituse vältimiseks kasutada külmkeevitusvastast määret või mootoriõli.

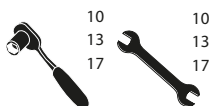
To prevent cold welding, use cold weld grease or engine oil.

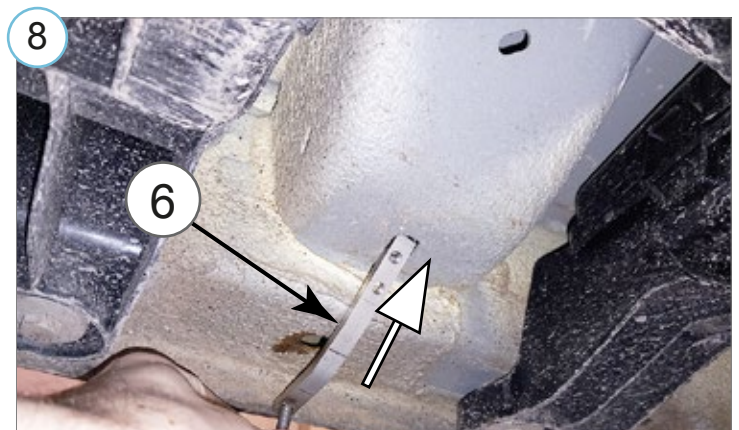
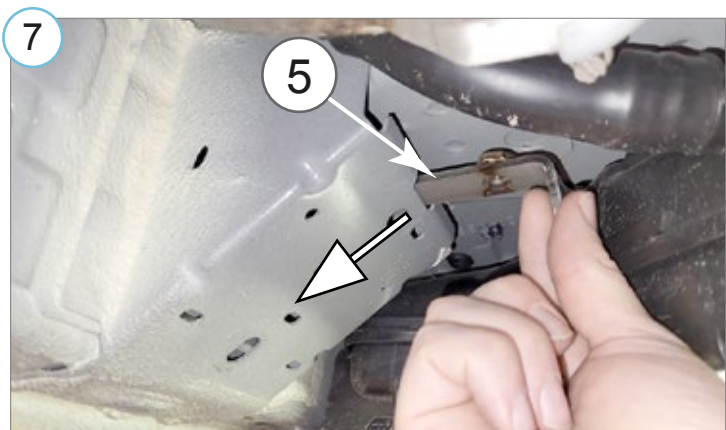
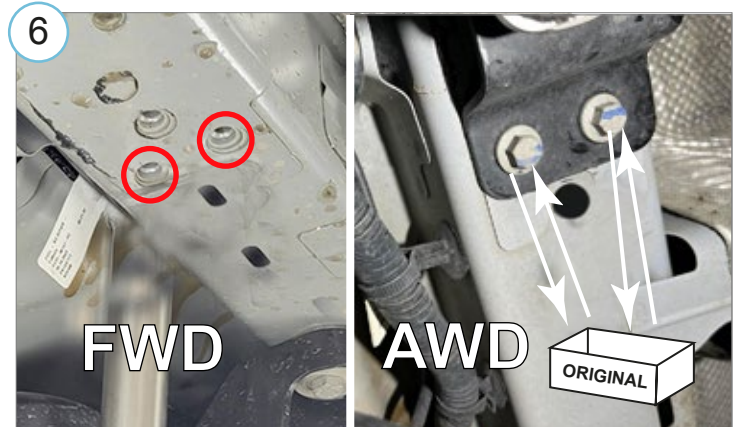
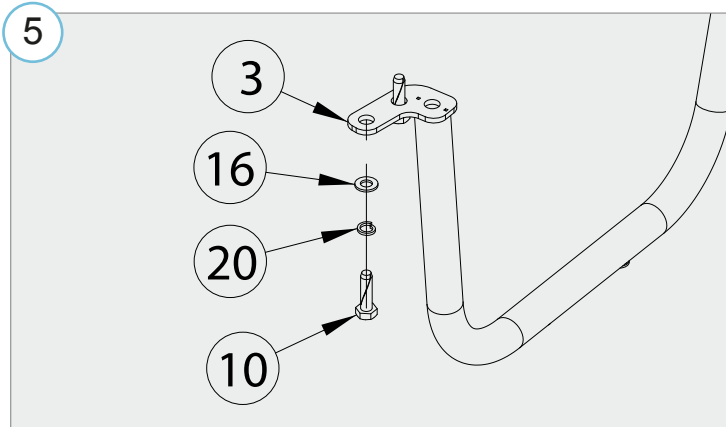
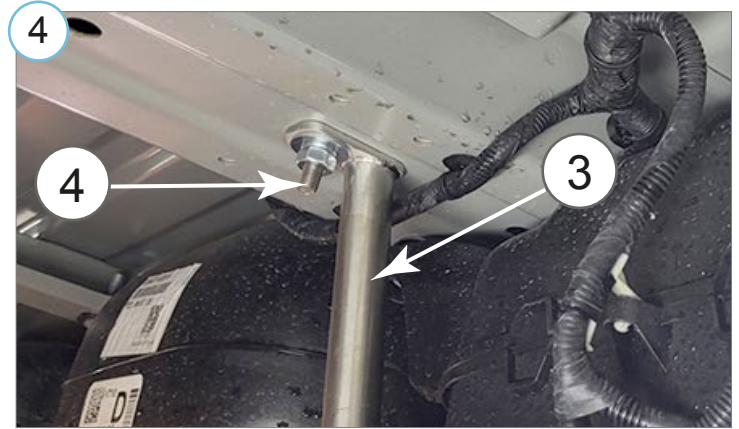
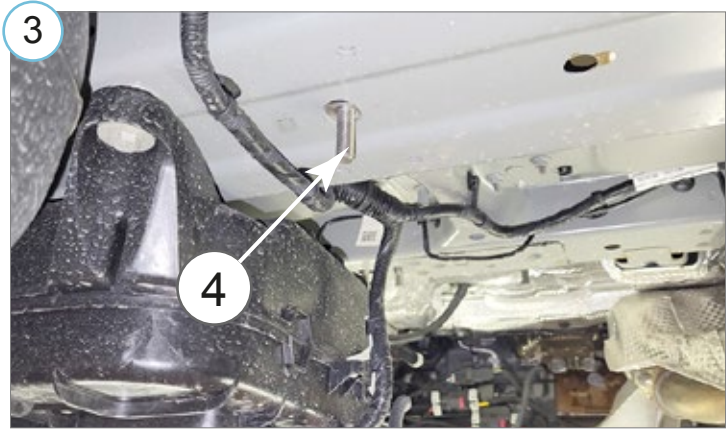
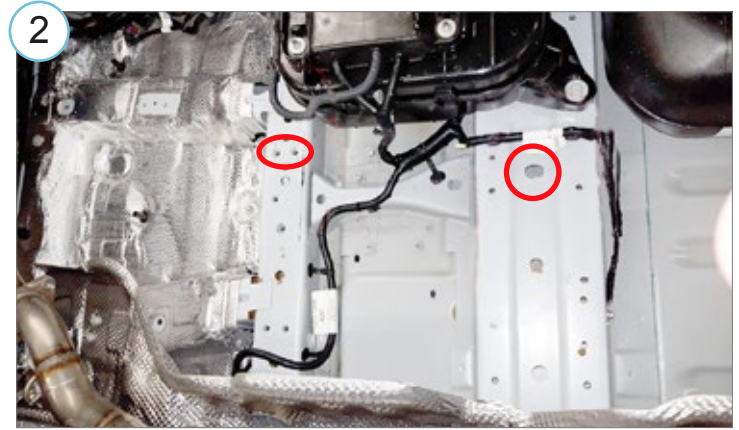
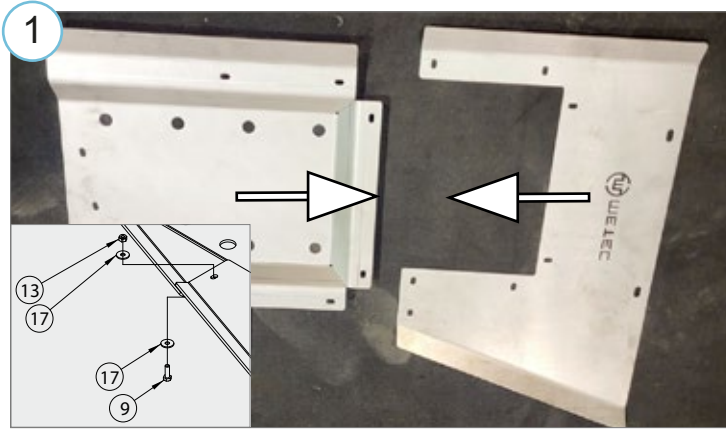
Verwenden Sie geeignetes Fett oder Motoröl, um die Kaltverschweißung zu verhindern.

Kaal / Weight / Gewicht: 8,5 kg

Paigaldusaeg ilma elektritöödeta / Time of mounting w/o wiring works / Einbauzeit ohne elektrische arbeit: 20 min

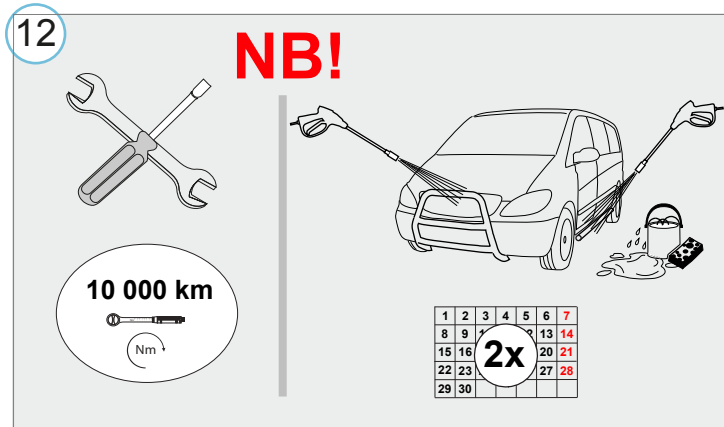
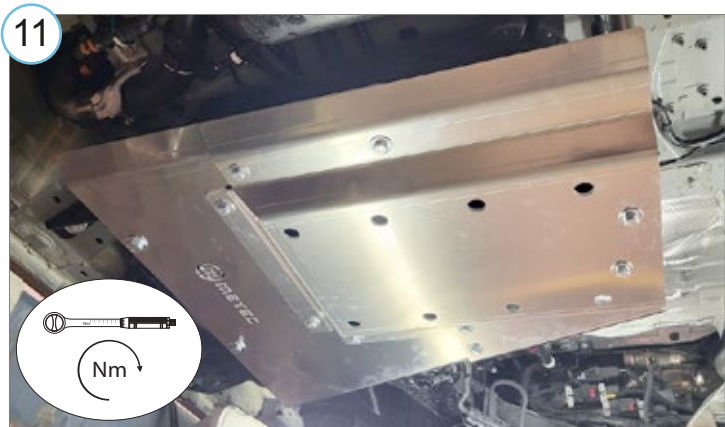
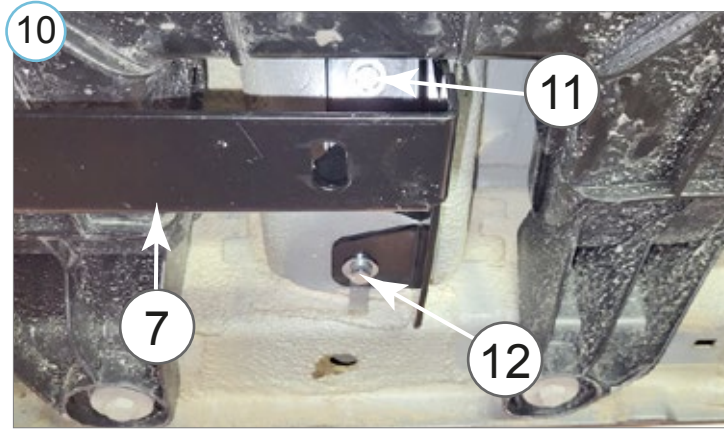
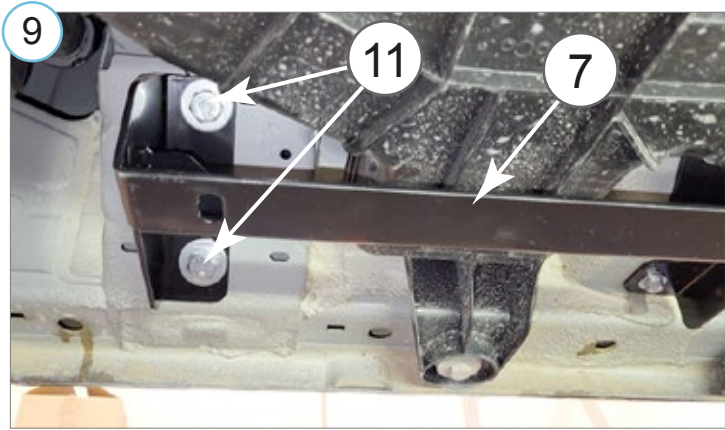
Vajalikud tööriistad / Required Tools / Benötigte Werkzeuge





Ford Transit/Tourneo Custom 23- (FWD, AWD)

Põhjakaitse AdBlue paagile | Skid plate for AdBlue tank | Unterfahrschutz für AdBlue tank



- Kui METEC toode ei vasta Teie ootustele või kui on tegemist toote ebapiisava kvaliteediga, siis pretensioonid esitada lehel www.metec.ee
- If the METEC product does not meet Your expectations or if it is a product of insufficient quality, then you can submit a claim at www.metec.ee
- Wenn METEC Produkt nicht Ihren Erwartungen entspricht oder wenn es um Qualitätsmängel geht, dann bitte die Ansprüche auf Seite www.metec.ee einreiche

Lisa / extra / Extra

