



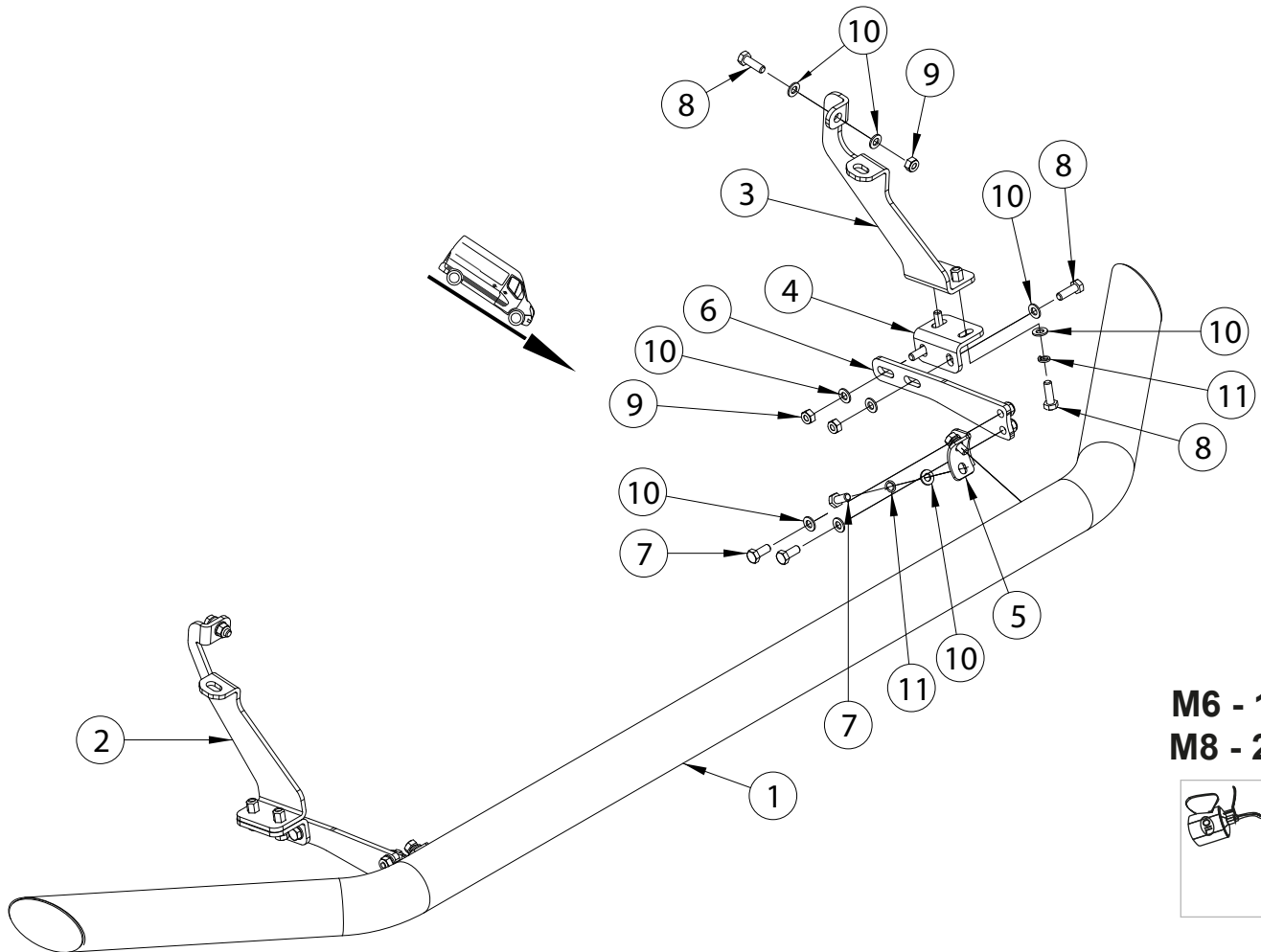
# Peugeot Expert; Citroen Jumpy; Toyota Proace 2016-

Art. 826400770, 826401770

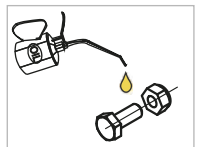
Stangeääris | Spoilerbar | Спойлербар | Spoilerbar



- |  |    |
|--|----|
| 1. Look / arc / дуга / Bogen                                       | 1  |
| 2. Kronstein / bracket / кронштейн / Konsole                       | 1  |
| 3. Kronstein / bracket / кронштейн / Konsole                       | 1  |
| 4. Vinkel / langeled plate / угольник / winkel                     | 2  |
| 5. Polditav kronstein / bolt bracket / кронштейн / Bolzenhalterung | 2  |
| 6. Latt / bracket / кронштейн / Latte                              | 2  |
| 7. Polt / bolt / болт / Bolzen M8x20                               | 8  |
| 8. Polt / bolt / болт / Bolzen M8x25                               | 10 |
| 9. Mutter / nut / гайка / Mutter M8                                | 10 |
| 10. Seib / washer / шайба / Scheibe 8,4x16x1,6                     | 28 |
| 11. Vedruseib / spring washer / пружинная шайба / Federnscheibe A8 | 8  |



**M6 - 11 Nm**  
**M8 - 25 Nm**



Kaal / Weight / Масса / Gewicht: 8,1 kg

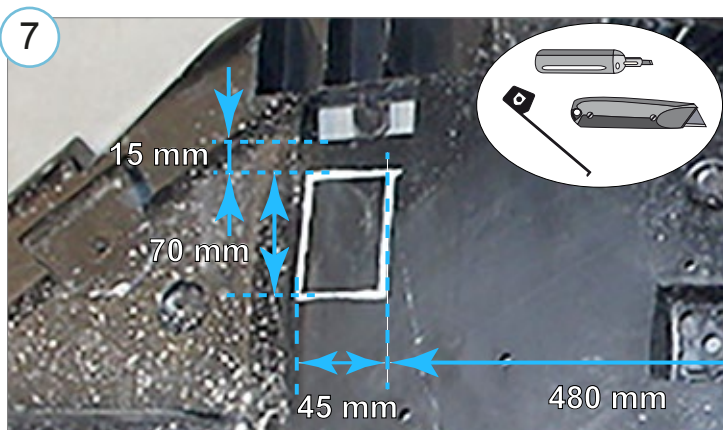
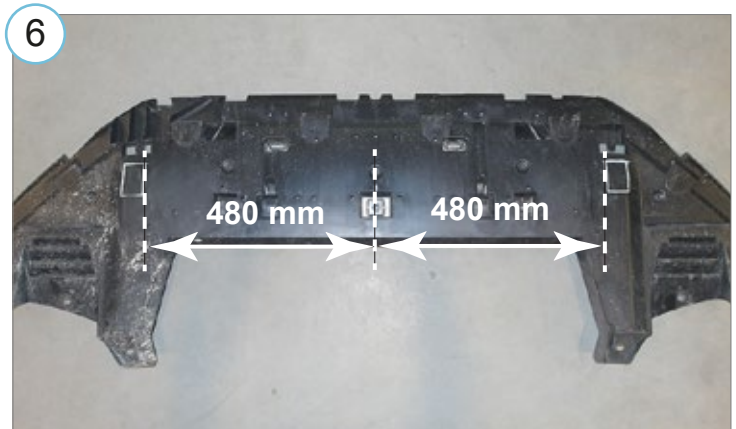
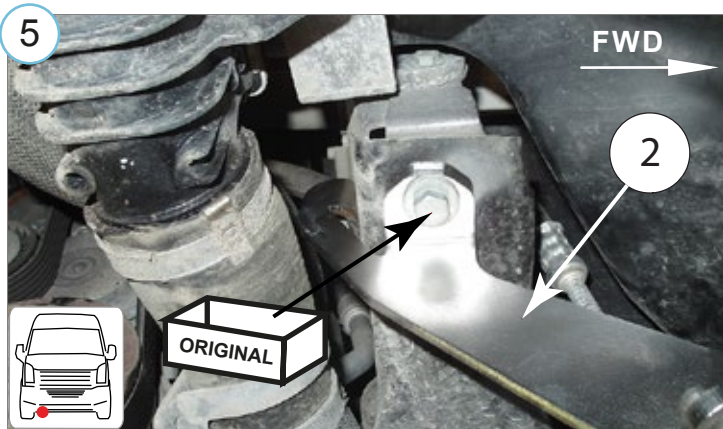
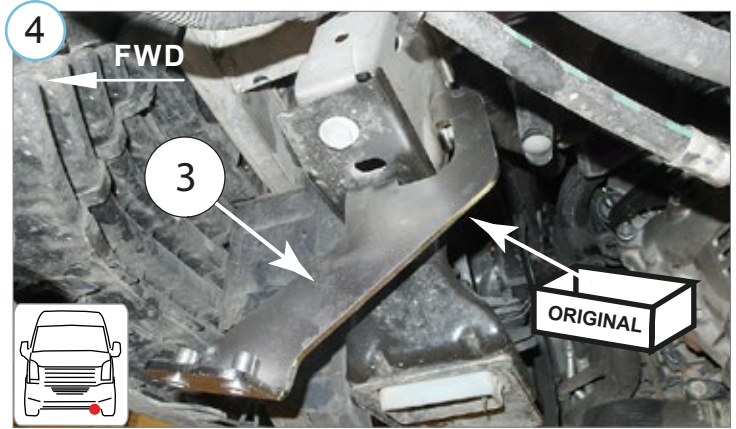
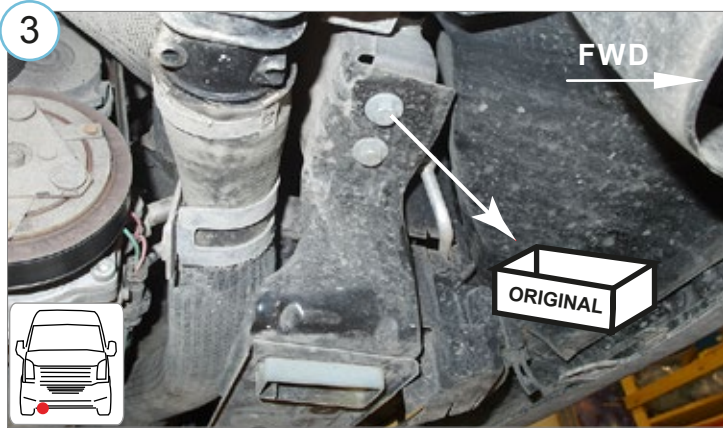
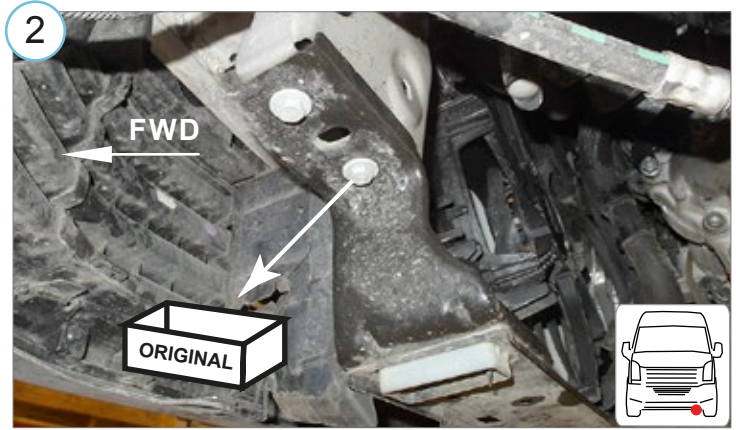
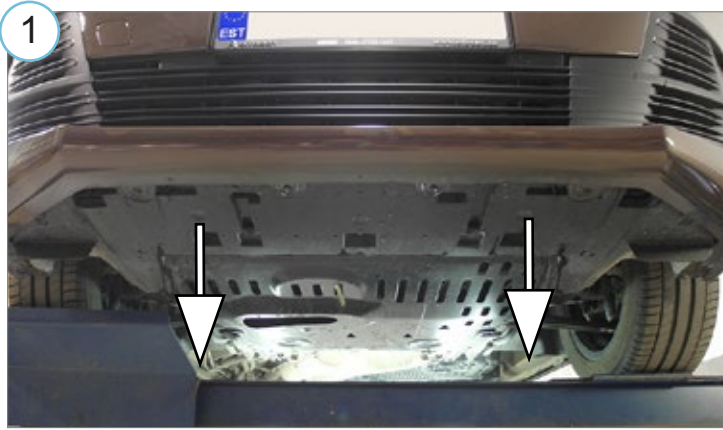
Paigaldusaeg / Time of mounting / Время установки / Einbauzeit: 45 min

Vajalikud tööriistad / Required Tools / Необходимые инструменты / Benötigte Werkzeuge



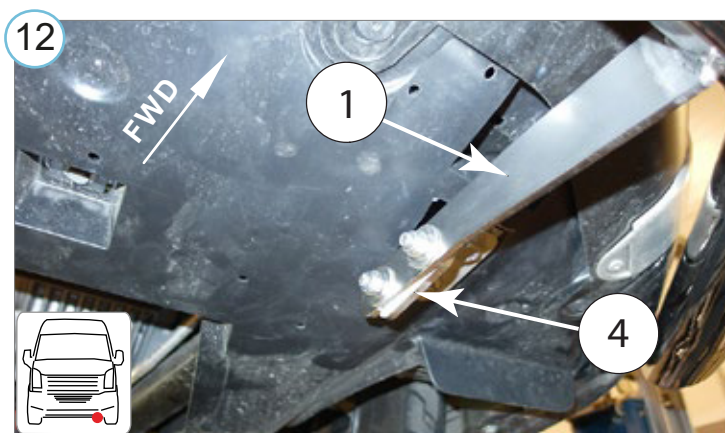
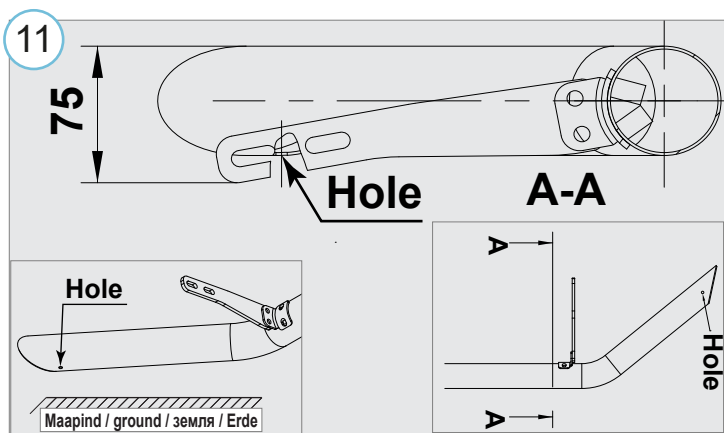
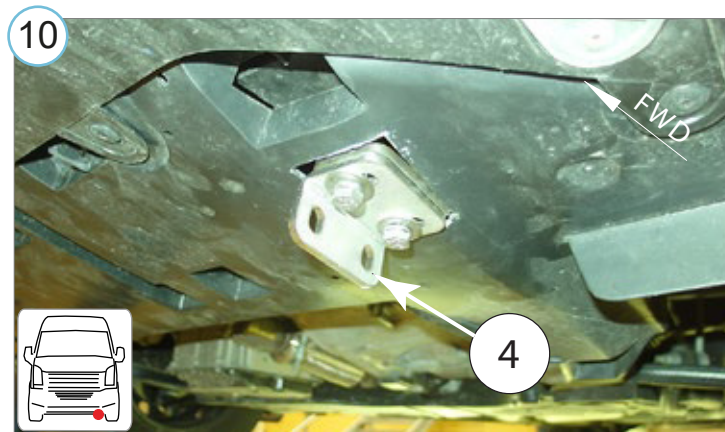
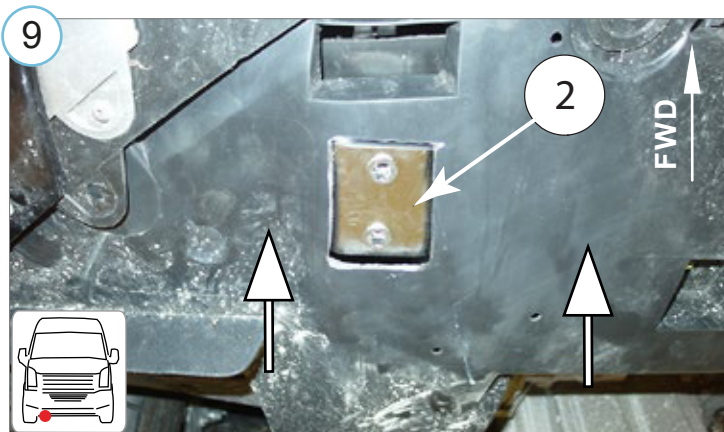
# Peugeot Expert; Citroen Jumpy; Toyota Proace 2016-

Stangeääris | Spoilerbar | Спойлербар | Spoilerbar



# Peugeot Expert; Citroen Jumpy; Toyota Proace 2016-

Stangeääris | Spoilerbar | Спойлербар | Spoilerbar



DLR päevasõidutulede elektriühendused teostada kvalifitseeritud autoelektriku poolt vastavalt tulede tootja paigaldusjuhendile

Installation of the DRL lights can be carried out by qualified electrician only, in accordance with the light manufacturer's instructions

Монтаж DRL огней может быть выполнено только квалифицированным электриком, в соответствии с инструкцией производителя.

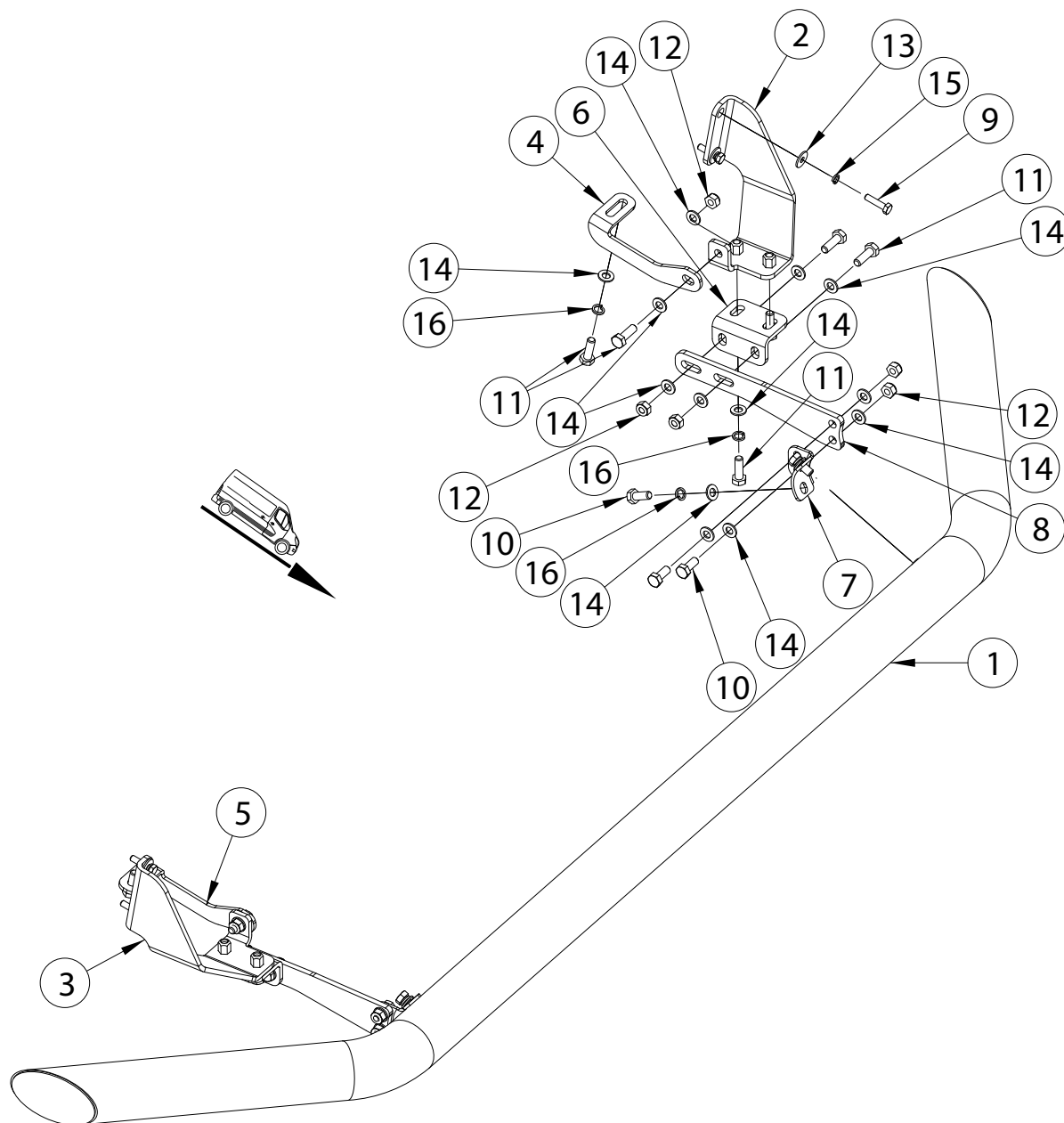
Die Installation der DRL Lichter können durchgeführt werden durch Elektrofachkraft in Übereinstimmung mit Herstelleranweisung.

# Peugeot Traveller; Citroen Spacetourer; Toyota Proace Verso 2016-

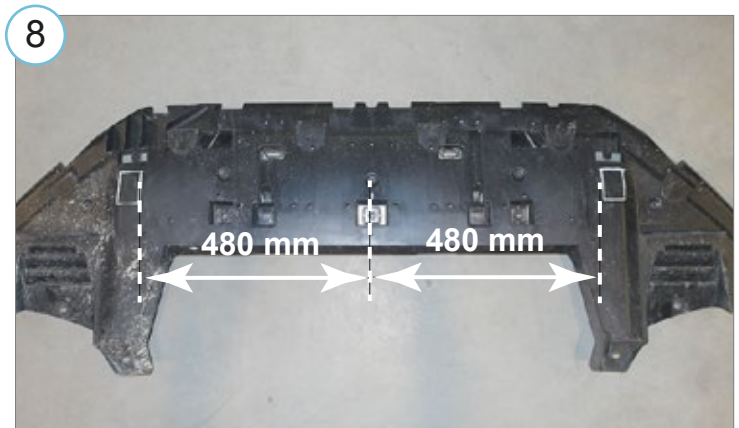
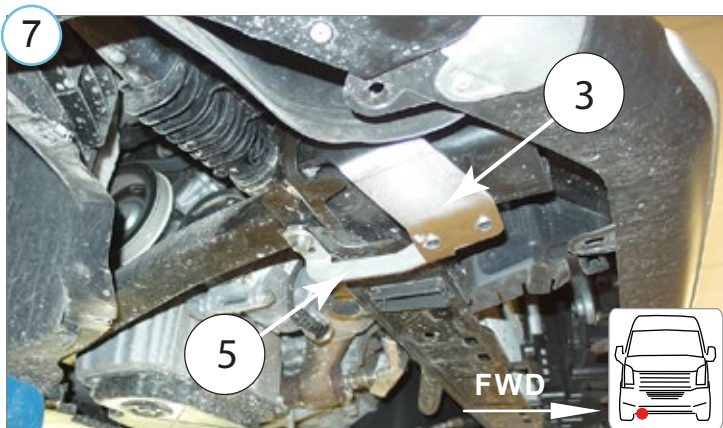
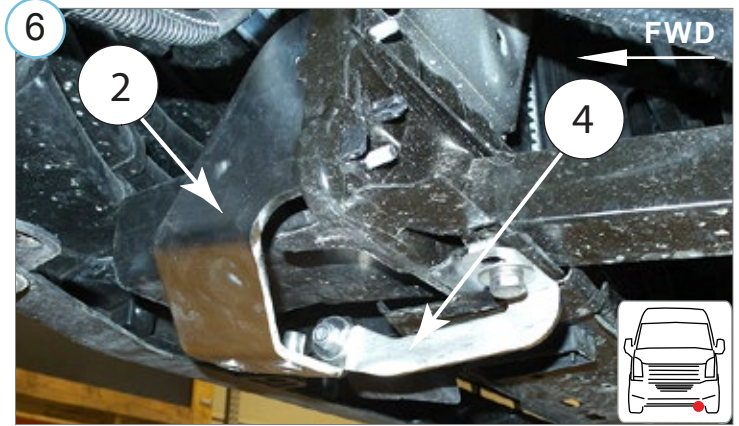
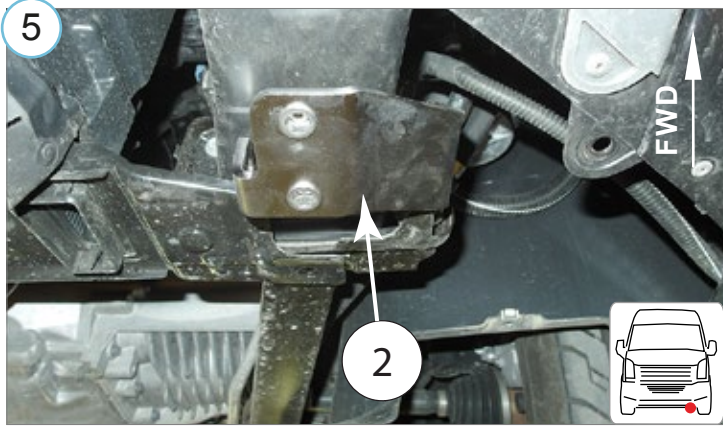
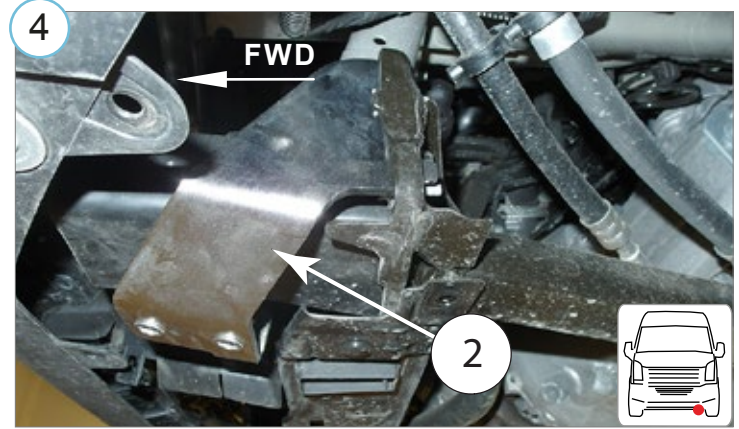
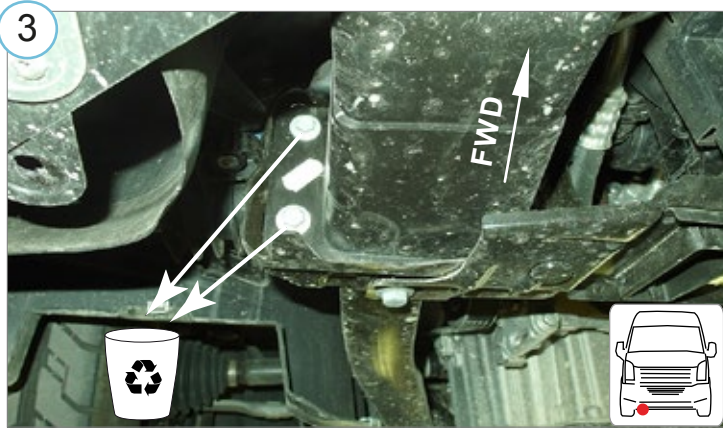
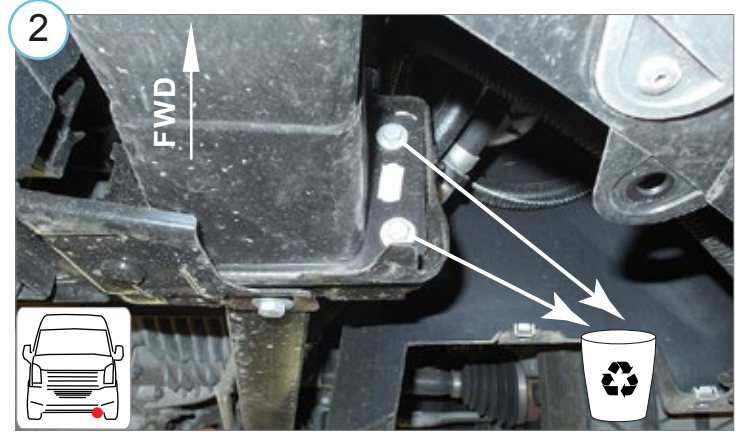
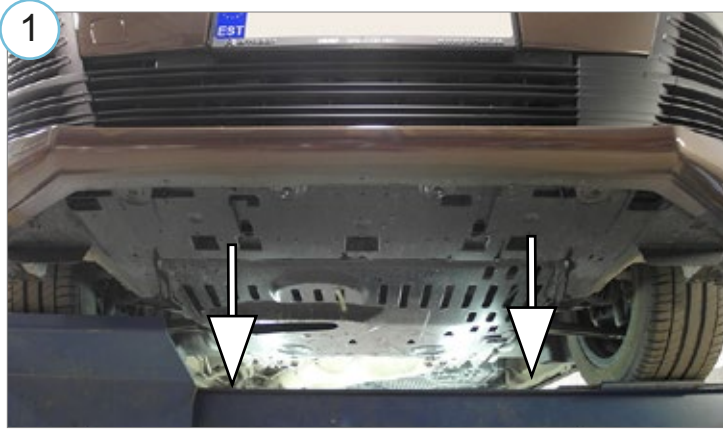
Stangeääris | Spoilerbar | Спойлербар | Spoilerbar



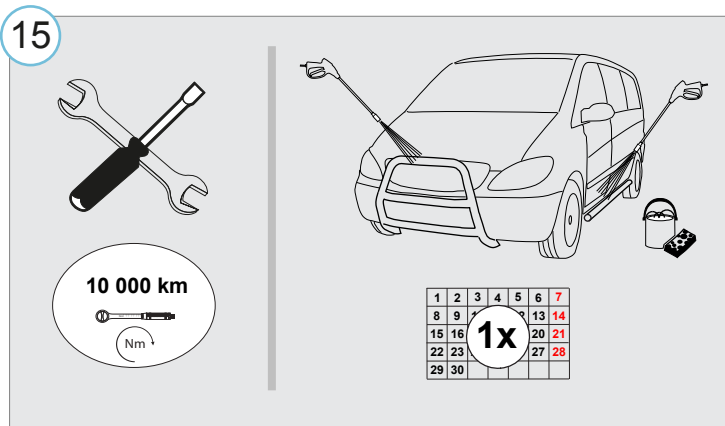
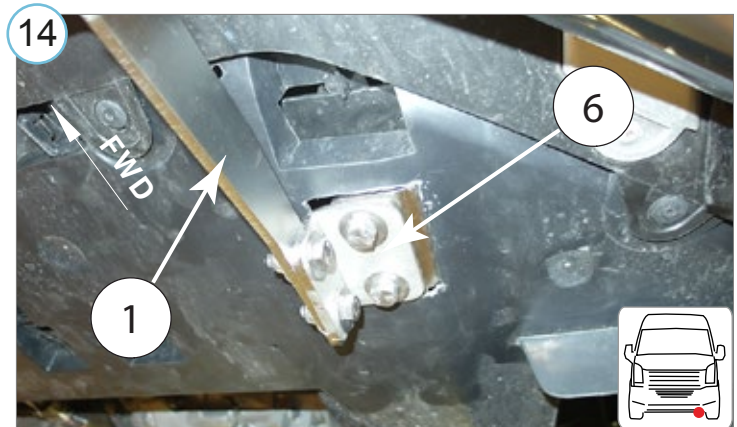
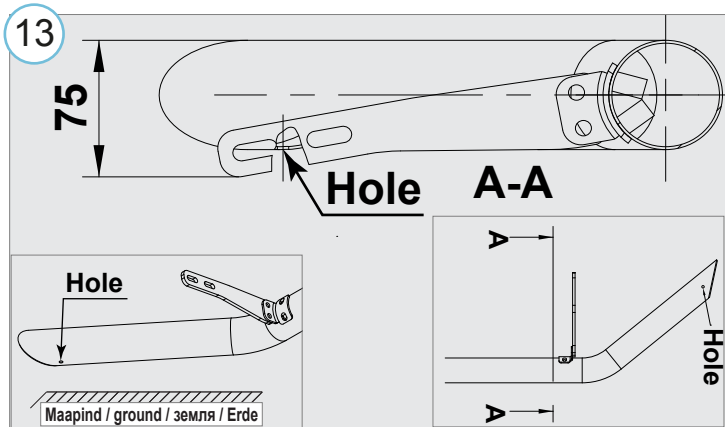
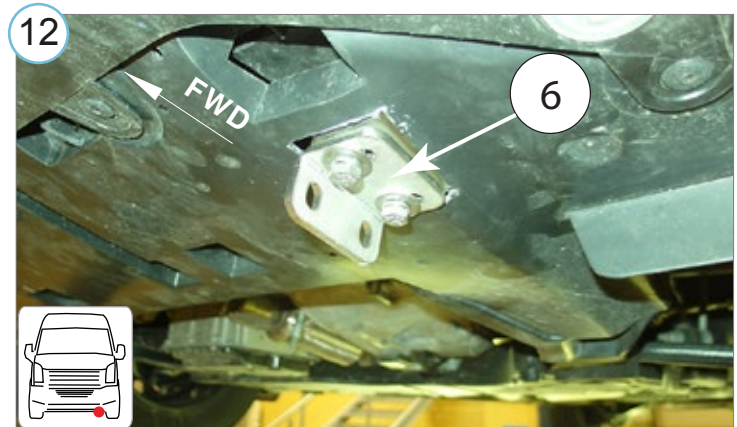
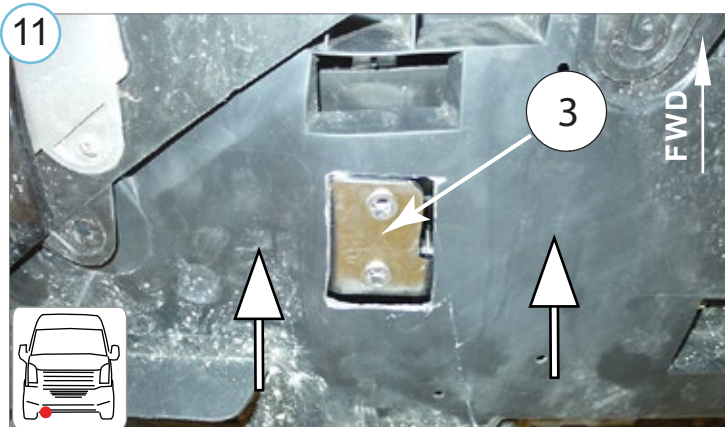
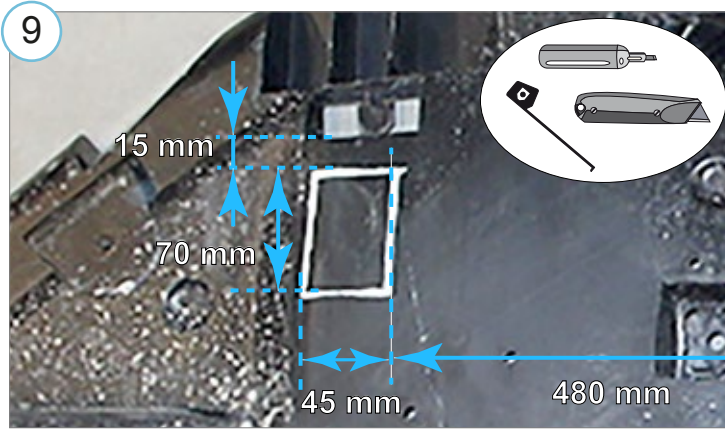
- |  |    |
|--|----|
| 1. Look / arc / дуга / Bogen                                       | 1  |
| 2. Kronstein / bracket / кронштейн / Konsole                       | 1  |
| 3. Kronstein / bracket / кронштейн / Konsole                       | 1  |
| 4. Kronstein / bracket / кронштейн / Konsole                       | 1  |
| 5. Kronstein / bracket / кронштейн / Konsole                       | 1  |
| 6. Vinkel / langed plate / угольник / winkel                       | 2  |
| 7. Polditav kronstein / bolt bracket / кронштейн / Bolzenhalterung | 2  |
| 8. Latt / bracket / кронштейн / Latte                              | 2  |
| 9. Polt / bolt / болт / Bolzen M6x25                               | 4  |
| 10. Polt / bolt / болт / Bolzen M8x20                              | 8  |
| 11. Polt / bolt / болт / Bolzen M8x25                              | 12 |
| 12. Mutter / nut / гайка / Mutter M8                               | 10 |
| 13. Seib / washer / шайба / Scheibe 6,4x18x1,6                     | 4  |
| 14. Seib / washer / шайба / Scheibe 8,4x24x2                       | 30 |
| 15. Vedruseib / spring washer / пружинная шайба / Federnscheibe A6 | 4  |
| 16. Vedruseib / spring washer / пружинная шайба / Federnscheibe A8 | 10 |



# Peugeot Traveller; Citroen Spacetourer; Toyota Proace Verso 2016- Stangeääris | Spoilerbar | Спойлербар | Spoilerbar



# Peugeot Traveller; Citroen Spacetourer; Toyota Proace Verso 2016- Stangeääris | Spoilerbar | Спойлербар | Spoilerbar



16

**Elektriühendused teostada kvalifitseeritud autoelektriku poolt**

**Installation of the lights can be carried out by qualified electrician only**

**Монтаж огней может быть выполнено только квалифицированным электриком**

**Die Installation der Lichter können durchgeführt werden durch Elektrofachkraft**

• Kui METEC toode ei vasta Teie ootustele või kui on tegemist toote ebapiisava kvaliteediga, siis pretensioonid esitada lehel [www.metec.ee](http://www.metec.ee)  
 • If the METEC product does not meet Your expectations or if it is a product of insufficient quality, then you can submit a claim at [www.metec.ee](http://www.metec.ee)  
 • Если METEC продукт не соответствует Вашим ожиданиям или это продукт недостаточного качества, то претензию предъявить можно на сайте [www.metec.ee](http://www.metec.ee)  
 • Wenn METEC Produkt nicht Ihren Erwartungen entspricht oder wenn es um Qualitätsmängel geht, dann bitte die Ansprüche auf Seite [www.metec.ee](http://www.metec.ee) einreichen