



Volvo FL 24-

Mounting instructions
Art. 86837570, 86837571
Lamp holder front

Scan the QR code
for translated
instructions or visit
metec.ee/instructions



Weight: 6,8 kg
Time of mounting w/o wiring: 30 min

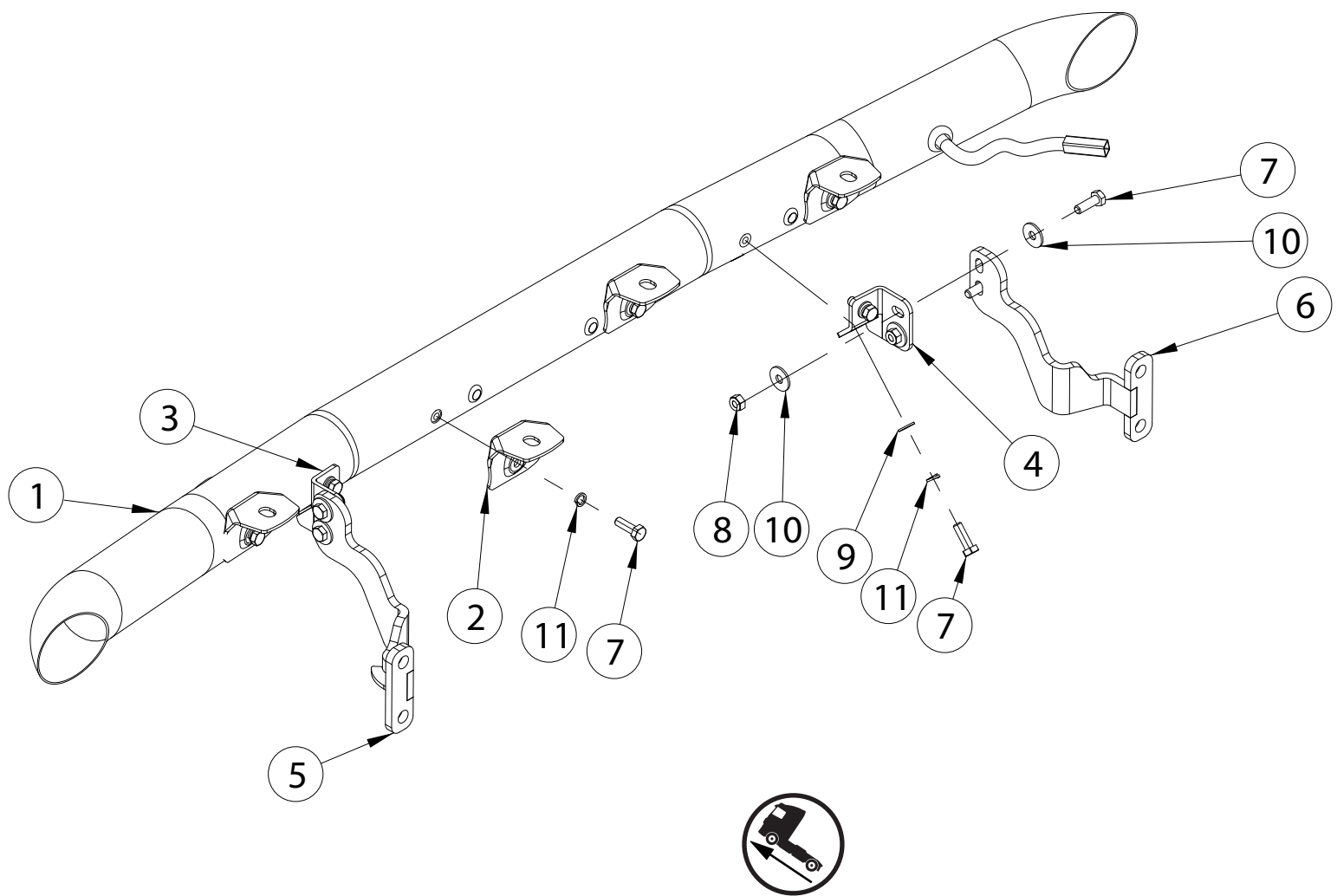
Required tools:

**A2 / A4****M8 - 17 Nm**

Volvo FL 24-

Art. 86837570, 86837571

Lamp holder front



Pos	Description	QTY
1.	Lamp holder	1
2.	Lamp fixing bracket	4
3.	Bracket	1
4.	Bracket	1
5.	Bracket	1
6.	Bracket	1
7.	Bolt M8x25 DIN933-A2	12
8.	Nut M8 DIN985-A2	4
9.	Flat Washer 8,4x16x1,6	4
10.	Flat Washer 8,4x24x2	8
11.	Spring washer A8	8

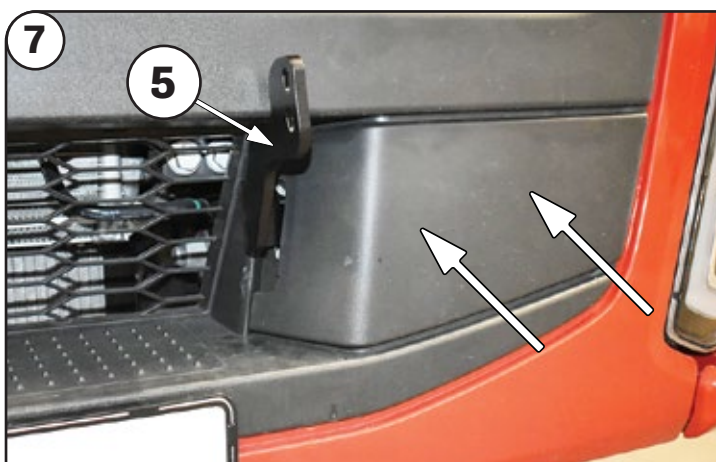
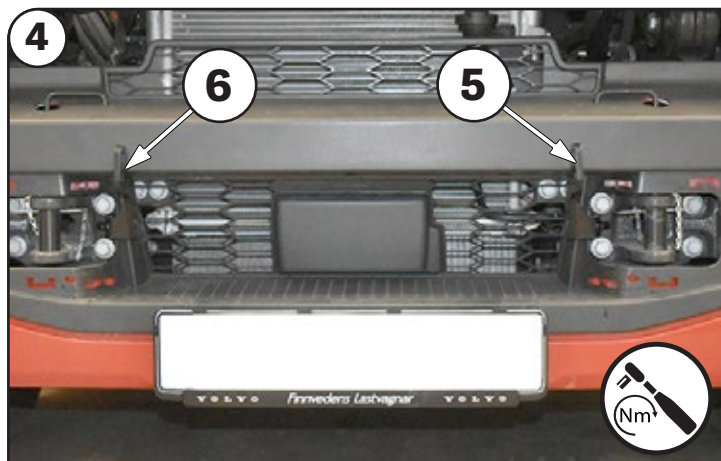
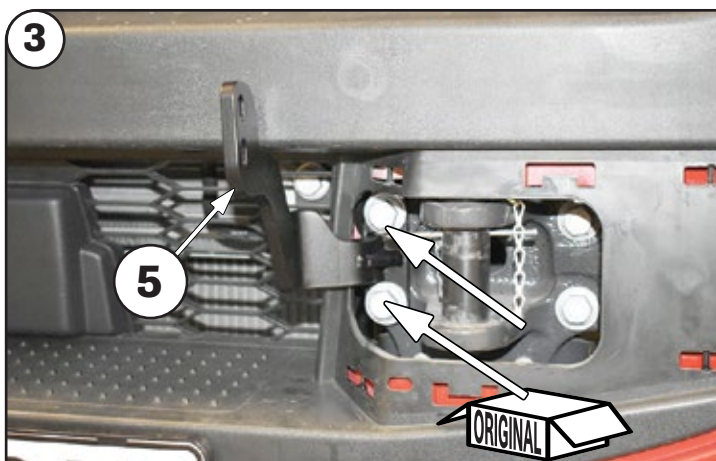
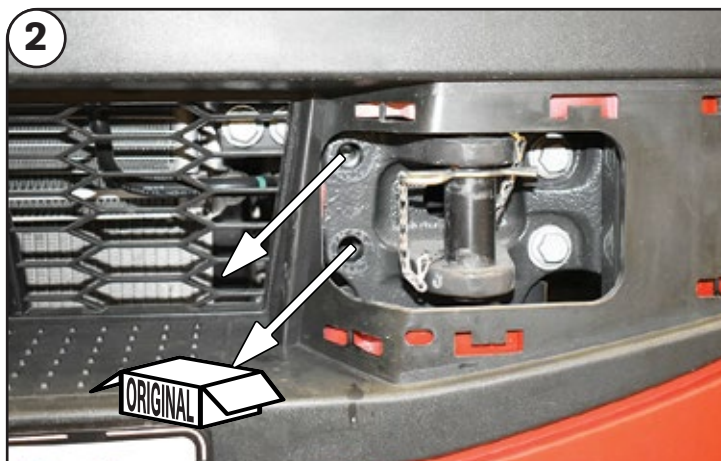
NB!



To prevent cold welding, use cold weld grease or engine oil



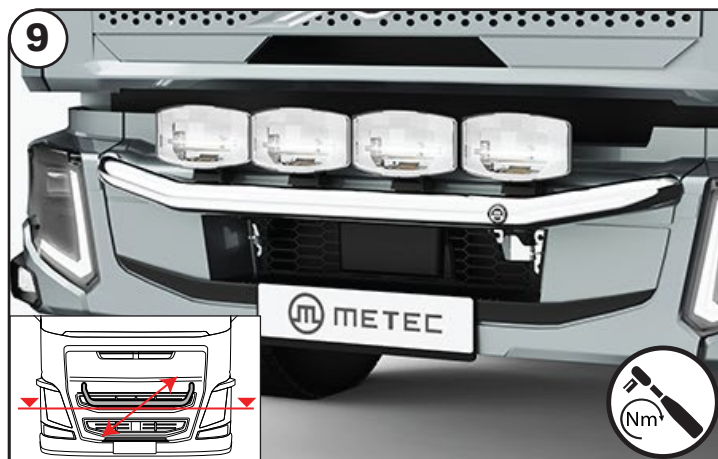
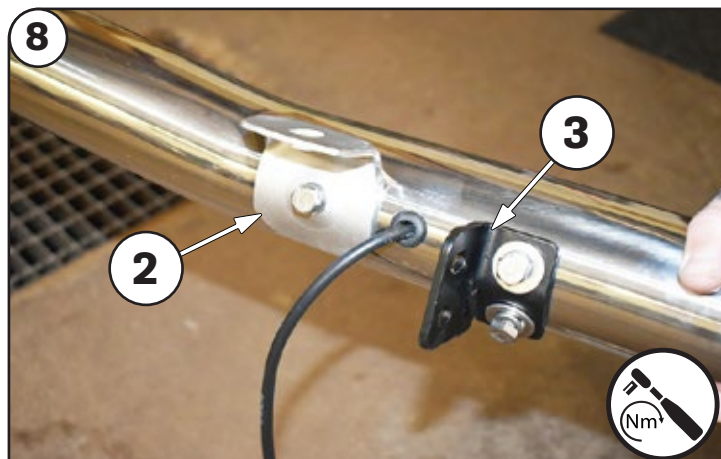
Installation of the lights must be carried out by a qualified electrician only



Volvo FL 24-

Art. 86837570, 86837571

Lamp holder front



Check and retighten the fasteners:
Road vehicles: every **10 000km**
Heavy machinery: every **500 work hours**



Clean the product twice a month to remove dirt, salt, and debris that may cause surface discoloration or rust spots

In case of any defects or damage to the METEC product upon delivery, contact the reseller or point of sale where you made your purchase for resolution