



# Hitachi ZX160-7

Mounting instructions  
 Art. 88600470, 88600471  
 Lamp holder for counterweight

Scan the QR code  
 for translated  
 instructions or visit  
[metec.ee/instructions](http://metec.ee/instructions)



Weight: 9,0 kg  
 Time of mounting w/o wiring: 45 min

**Required tools:**

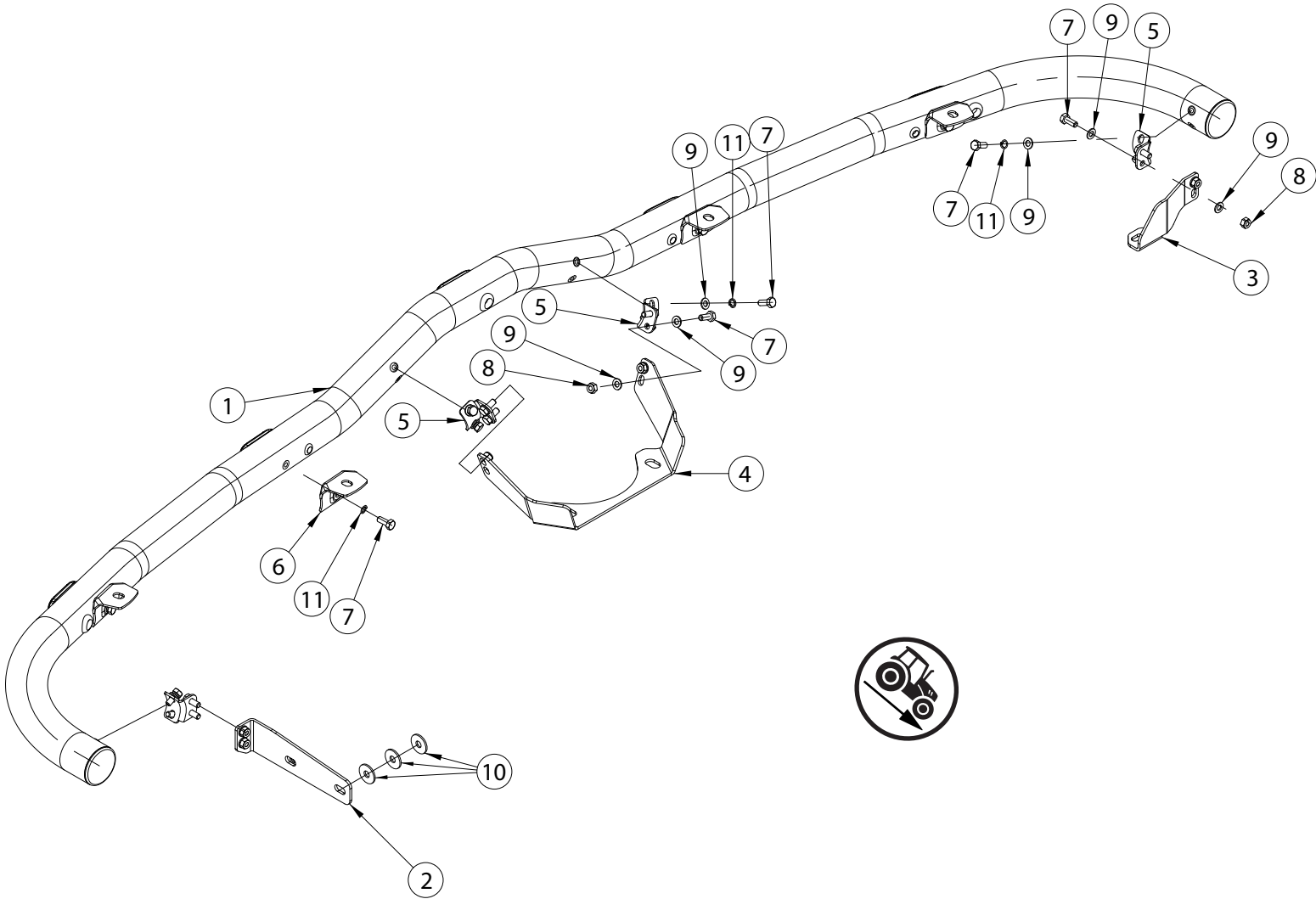


A2 / A4	Zn
M8 - 17 Nm	M10 - 47 Nm

# Hitachi ZX160-7

Art. 88600470, 88600471

Lamp holder for counterweight



Pos	Description	QTY
1.	Tube	1
2.	Bracket	1
3.	Bracket	1
4.	Bracket	1
5.	Bolt bracket	4
6.	Lamp fixing bracket	4
7.	Bolt M8x20 DIN933-A2	20
8.	Nut M8 DIN985-A2	8
9.	Flat Washer 8,4x16x1,6	24
10.	Flat Washer 10,5x30x2,5	6
11.	Spring washer A8	12

# Hitachi ZX160-7

Art. 88600470, 88600471

Lamp holder for counterweight

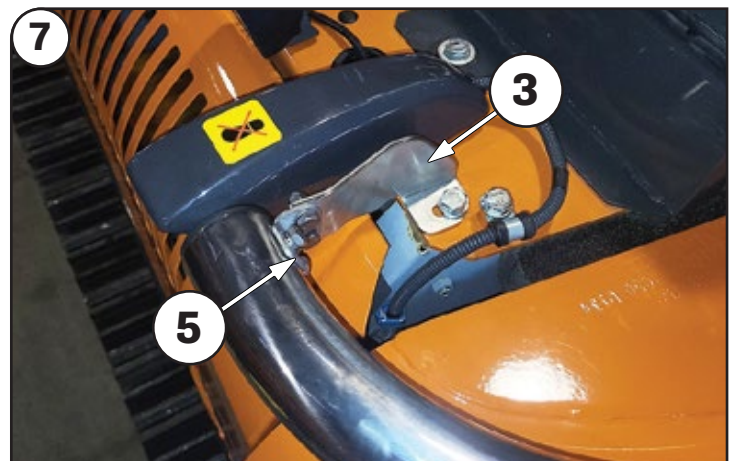
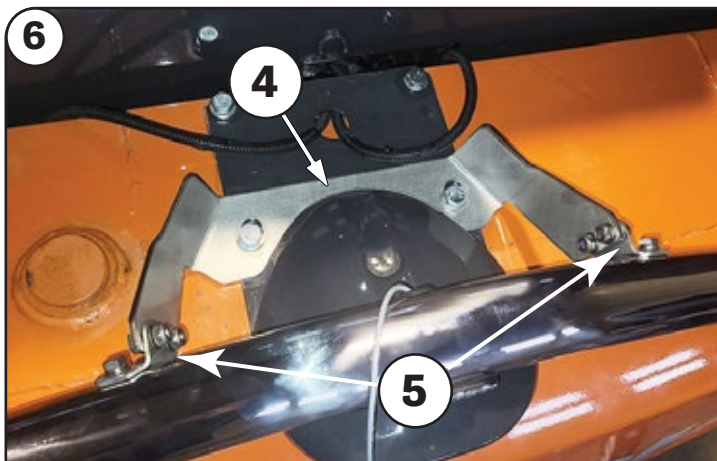
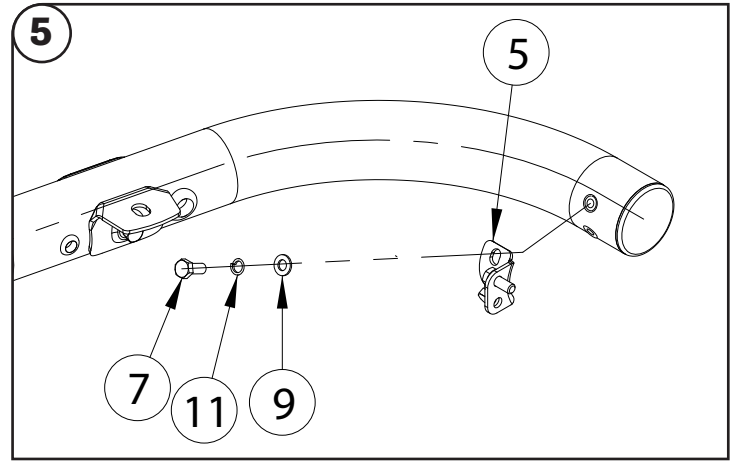
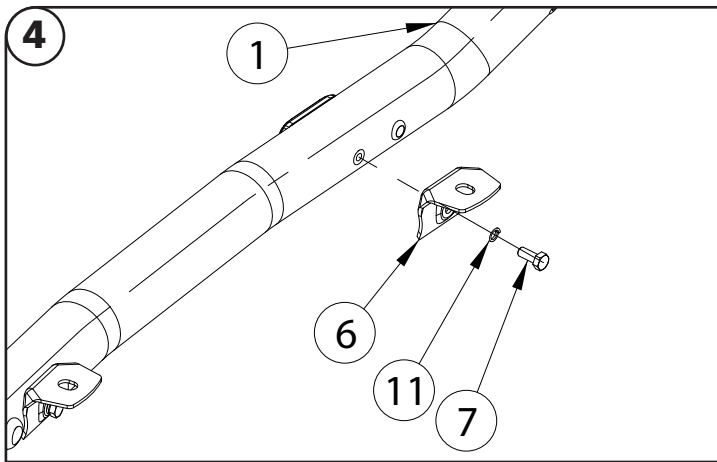
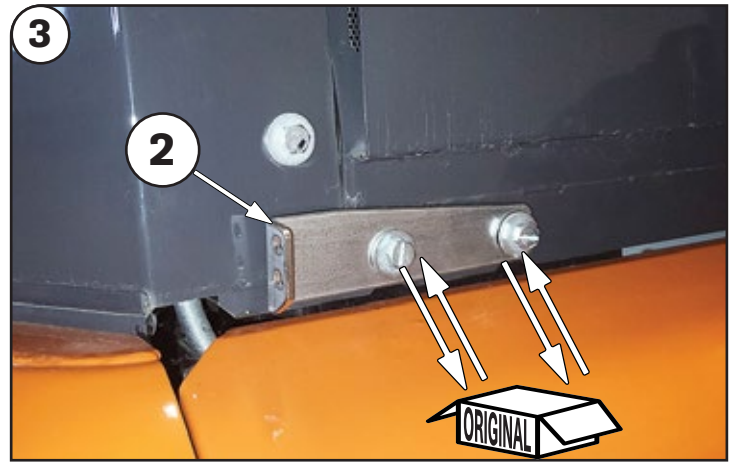
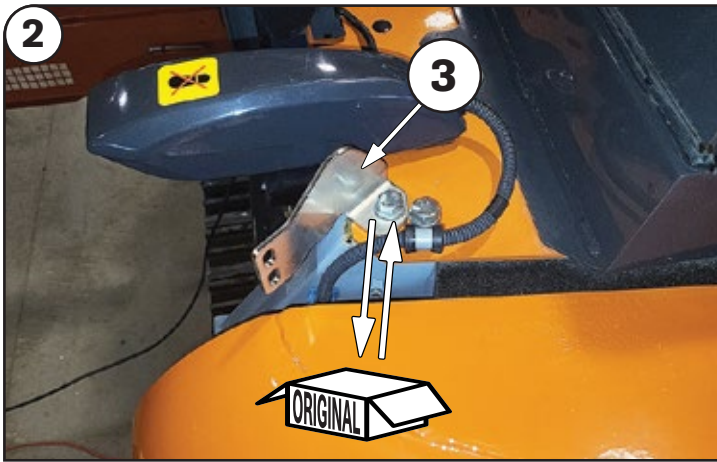
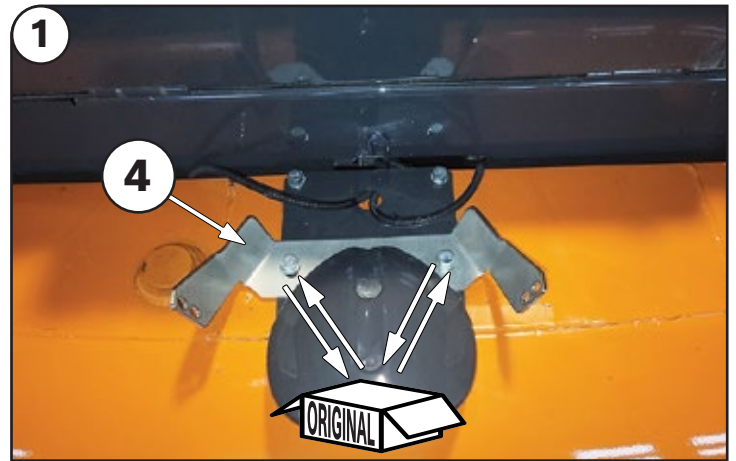
## NB!



To prevent cold welding, use cold weld grease or engine oil



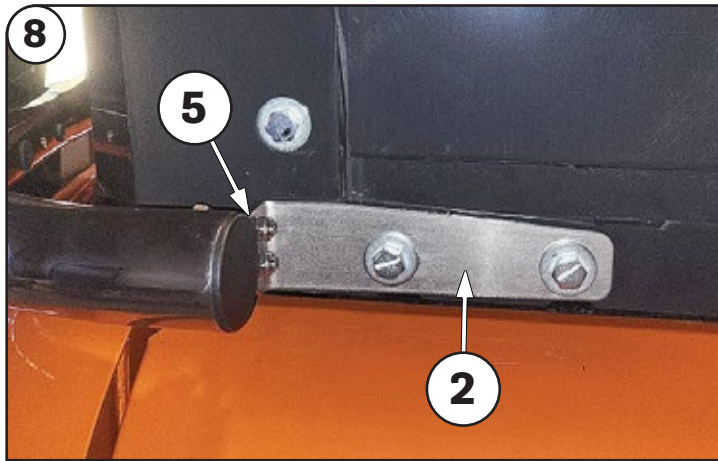
Installation of the lights must be carried out by a qualified electrician only



## Hitachi ZX160-7

Art. 88600470, 88600471

Lamp holder for counterweight



Check and retighten the fasteners:  
Road vehicles: every **10 000km**  
Heavy machinery: every **500 work hours**



Clean the product twice a month to remove dirt, salt, and debris that may cause surface discoloration or rust spots

In case of any defects or damage to the METEC product upon delivery, contact the reseller or point of sale where you made your purchase for resolution