



Volvo EC300FL

Mounting instructions
Art. 88610370, 88610371
Lamp holder for counterweight

Scan the QR code
for translated
instructions or visit
metec.ee/instructions



Weight: 9,4 kg
Time of mounting w/o wiring: 45 min

Required tools:



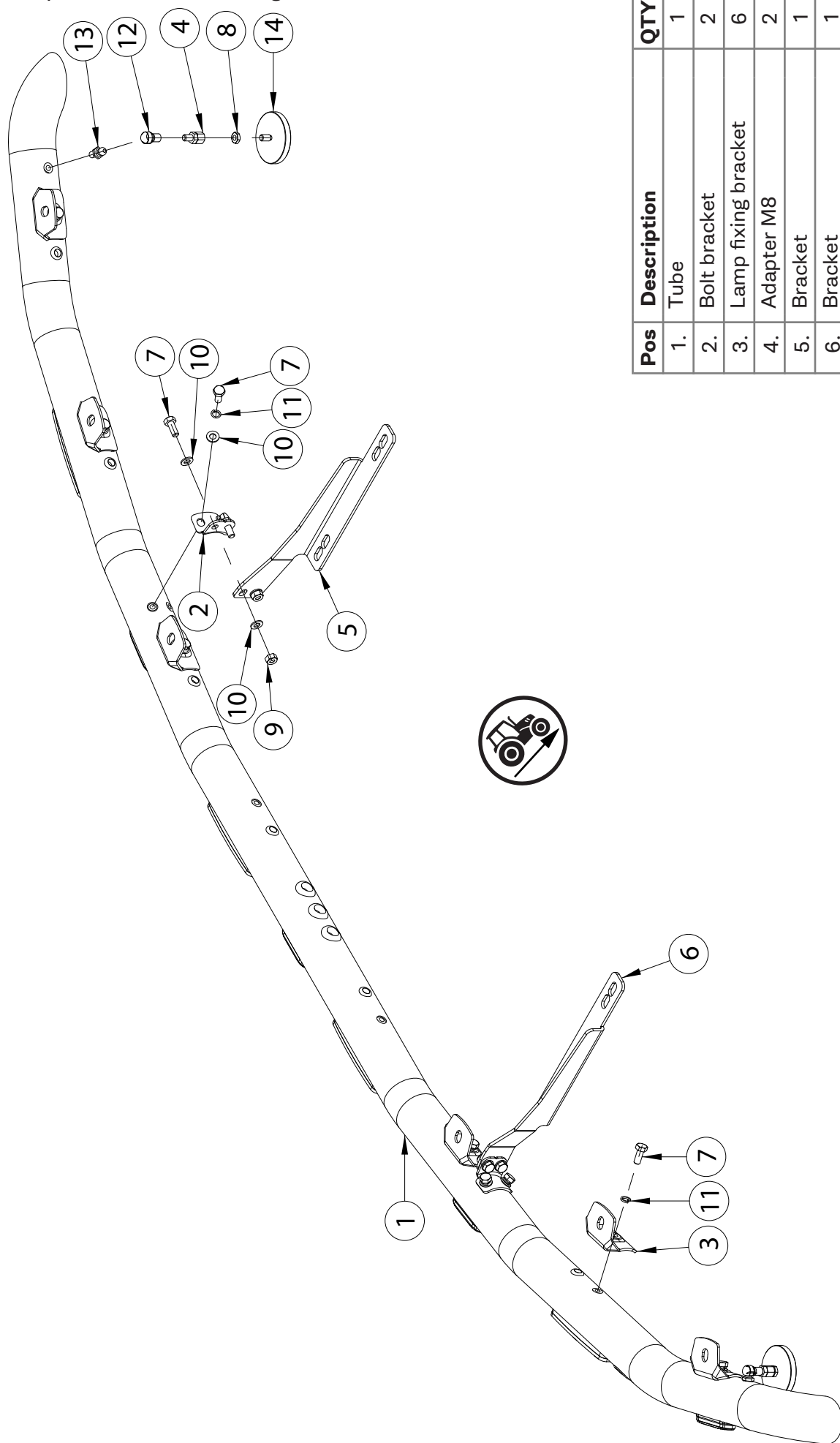
A2 / A4

M8 - 17 Nm

Volvo EC300FL

Art. 88610370, 88610371

Lamp holder for counterweight



Pos	Description	QTY
1.	Tube	1
2.	Bolt bracket	2
3.	Lamp fixing bracket	6
4.	Adapter M8	2
5.	Bracket	1
6.	Bracket	1
7.	Bolt M8x20 DIN933-A2	14
8.	Nut M8 DIN439-A2	2
9.	Nut M8 DIN985-A2	4
10.	Flat Washer 8,4x16x1,6	12
11.	Spring washer A8	10
12.	Ball joint	2
13.	Socket joint	2
14.	Magnetic fastening M8x15	2

Volvo EC300FL

Art. 88610370, 88610371

EuroLamp holder for counterweight

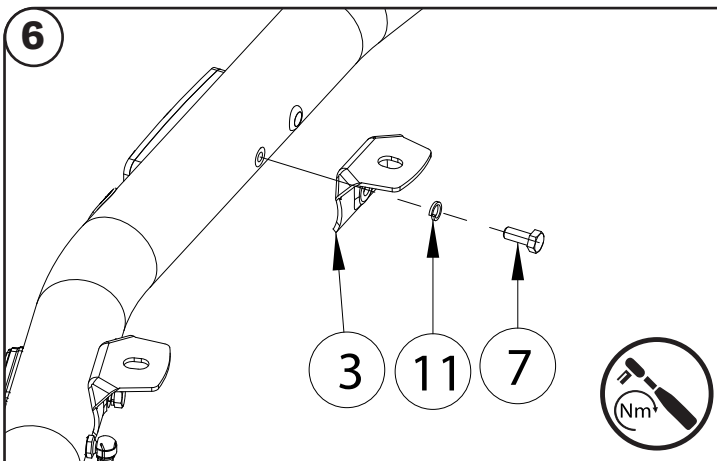
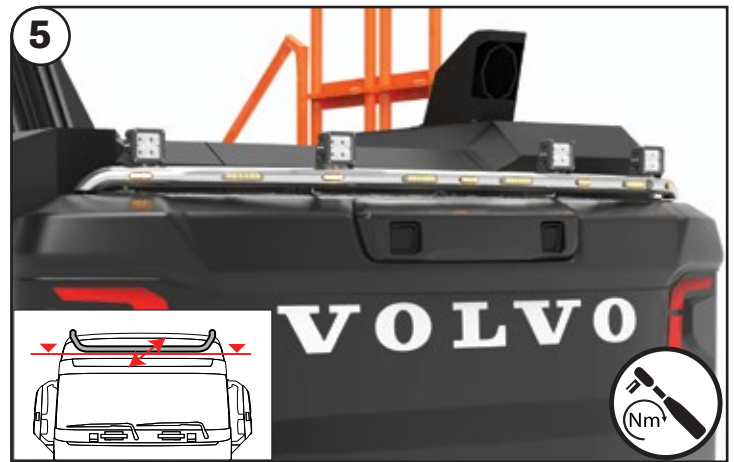
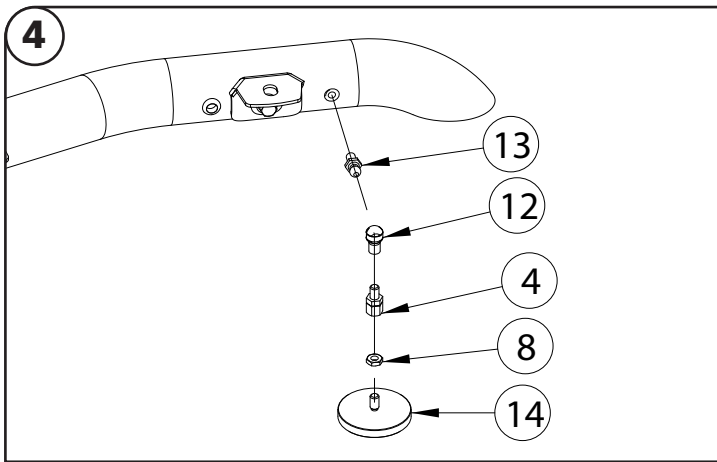
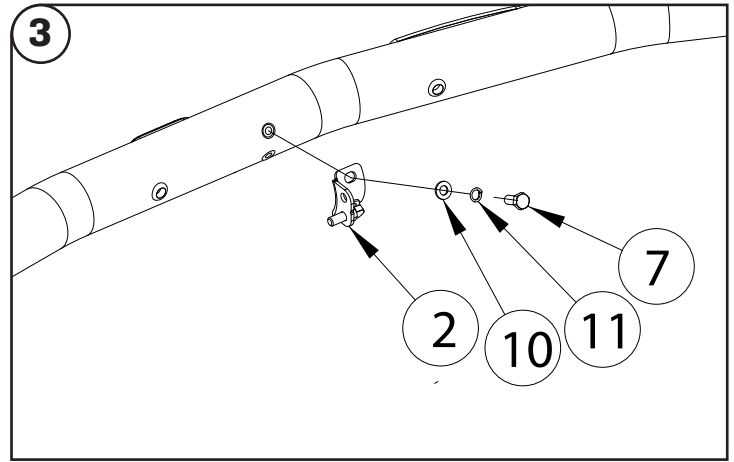
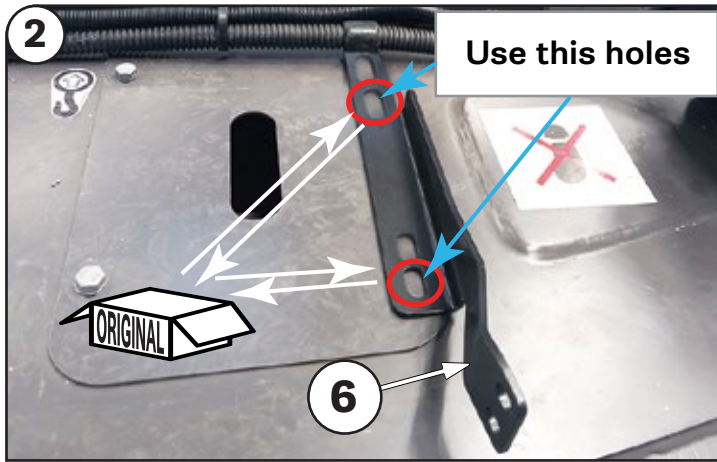
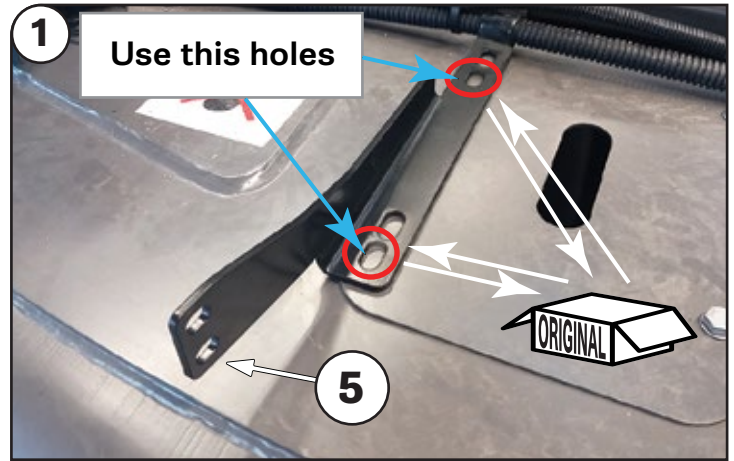
NB!



To prevent cold welding, use cold weld grease or engine oil



Installation of the lights must be carried out by a qualified electrician only



Check and retighten the fasteners:
Road vehicles: every 10 000km
Heavy machinery: every 500 work hours



Clean the product twice a month to remove dirt, salt, and debris that may cause surface discoloration or rust spots

In case of any defects or damage to the METEC product upon delivery, contact the reseller or point of sale where you made your purchase for resolution

Flashlights (F) cord designation

