



# Volvo EC230FL

Mounting instructions  
Art. 88610470, 88610471  
Lamp holder for counterweight

Scan the QR code  
for translated  
instructions or visit  
[metec.ee/instructions](http://metec.ee/instructions)



Weight: 12,9 kg  
Time of mounting w/o wiring: 60 min

**Required tools:**

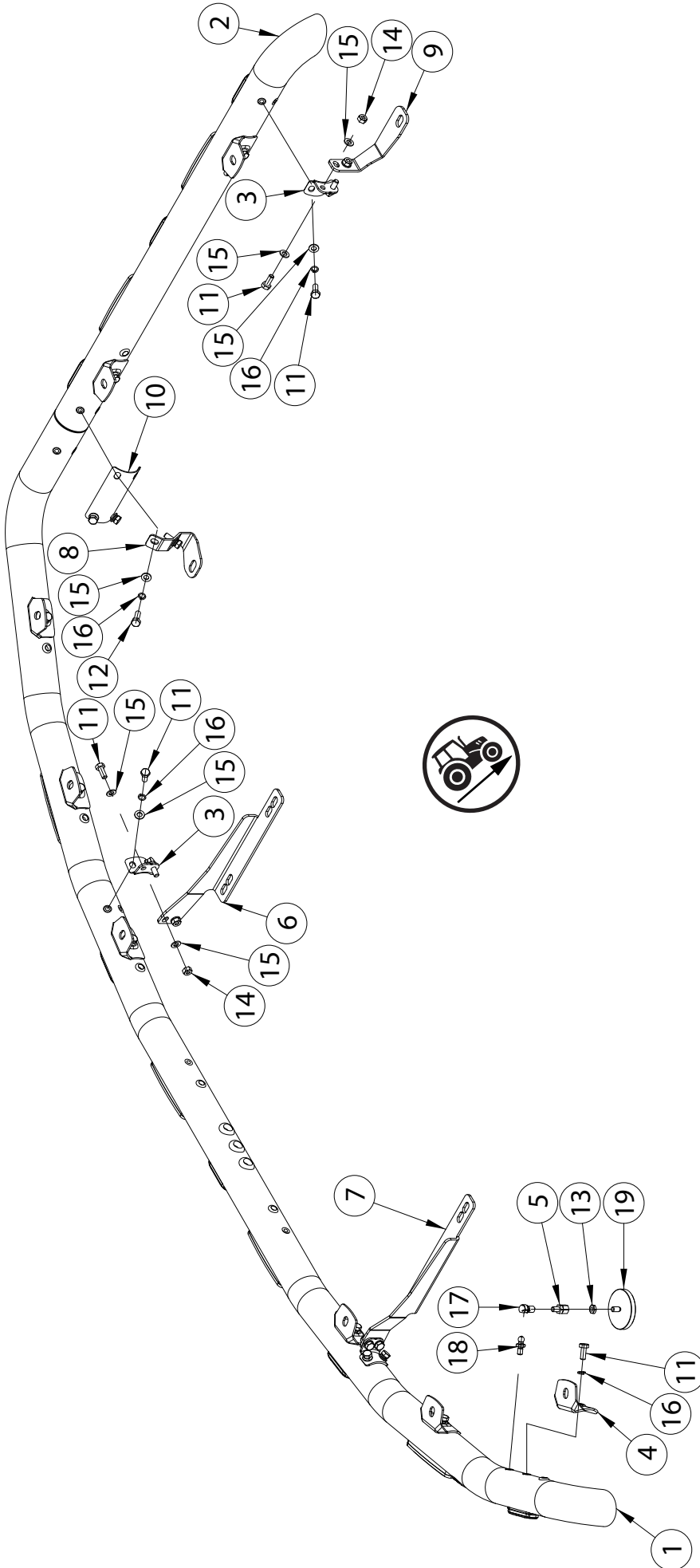


A2 / A4
M8 - 17 Nm

# Volvo EC230FL

Art. 88610470, 88610471

Lamp holder for counterweight



Pos	Description	QTY
11.	Bolt M8x20 DIN933-A2	20
12.	Bolt M8x25 DIN933-A2	4
13.	Nut M8 DIN439-A2	1
14.	Nut M8 DIN985-A2	6
15.	Flat Washer 8,4x16x1,6	22
16.	Spring washer A8	18
17.	Ball joint	1
18.	Socket joint	1
19.	Magnetic fastening M8x15	1

Pos	Description	QTY
1.	Tube	1
2.	Tube	1
3.	Bolt bracket	3
4.	Lamp fixing bracket	8
5.	Adapter M8	1
6.	Bracket	1
7.	Bracket	1
8.	Bracket	1
9.	Bracket	1
10.	Tube bracket	1

# Volvo EC230FL

Art. 88610470, 88610471

EuroLamp holder for counterweight

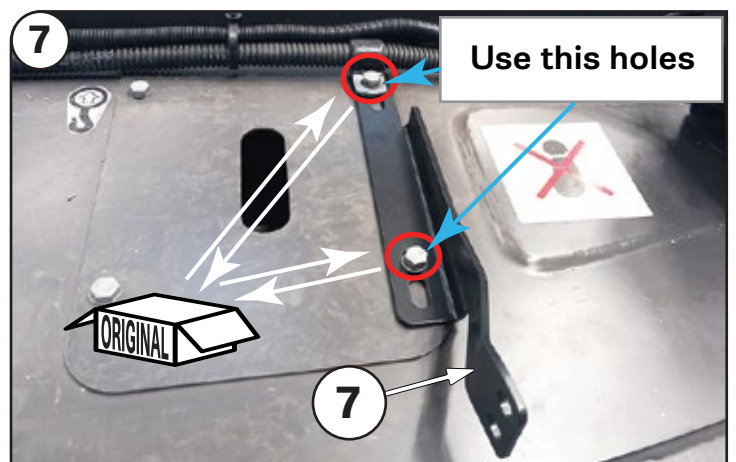
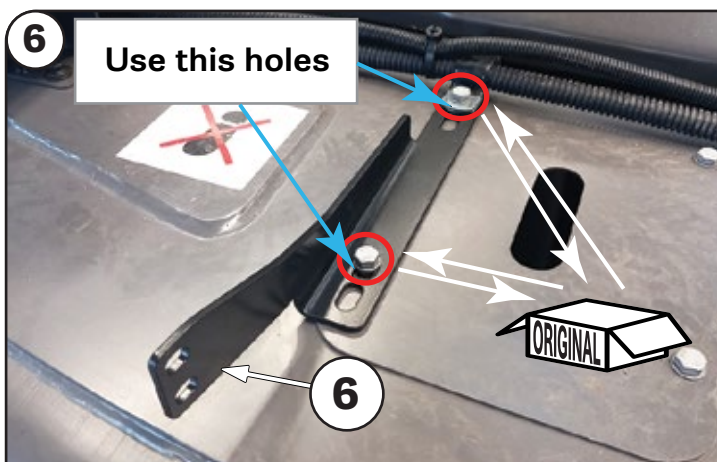
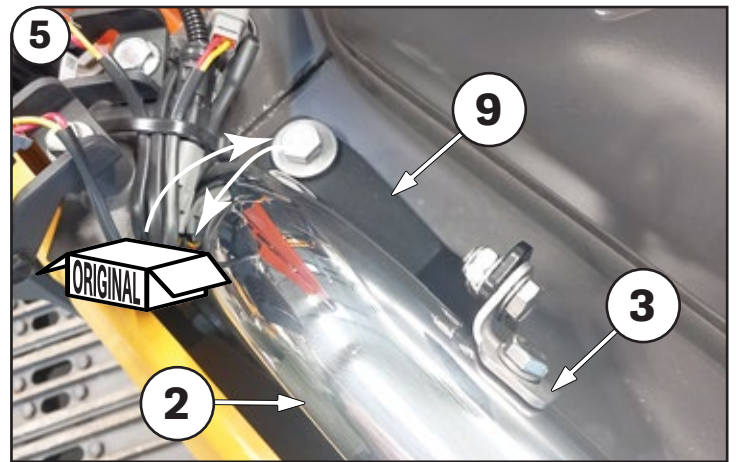
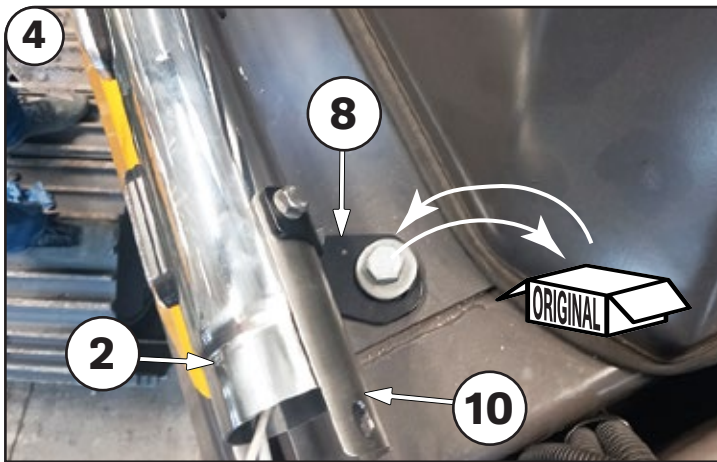
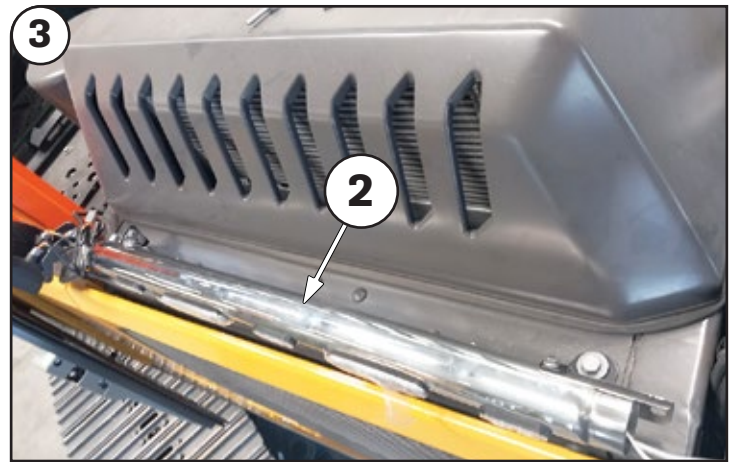
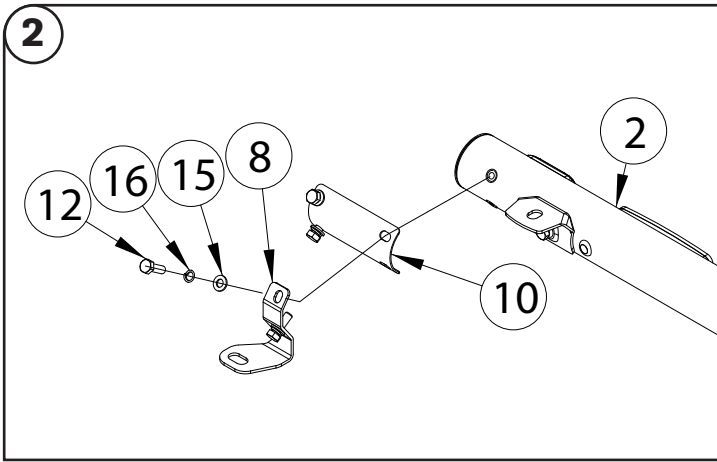
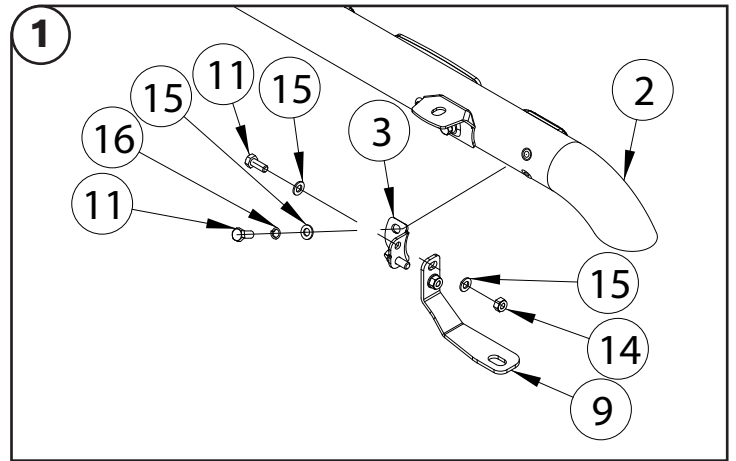
## NB!



To prevent cold welding, use cold weld grease or engine oil



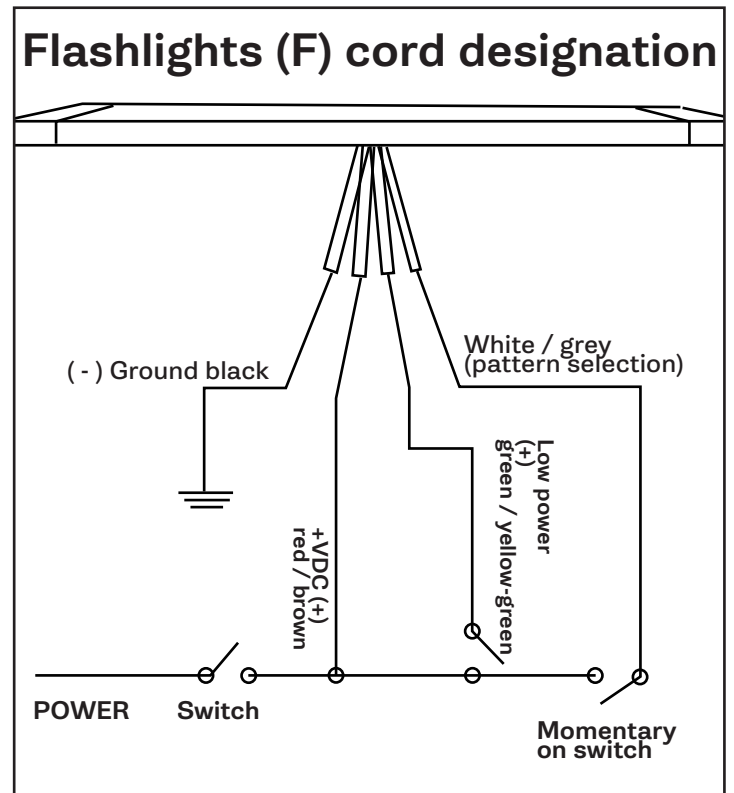
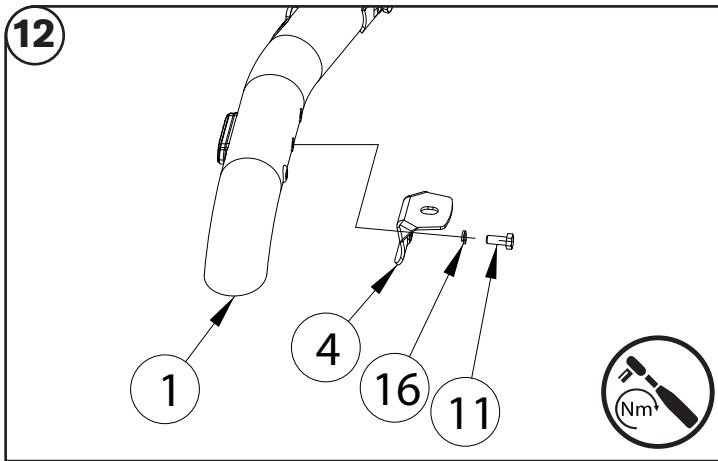
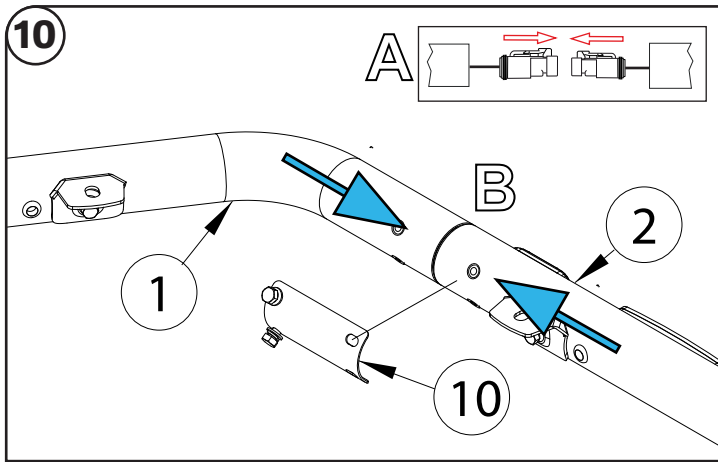
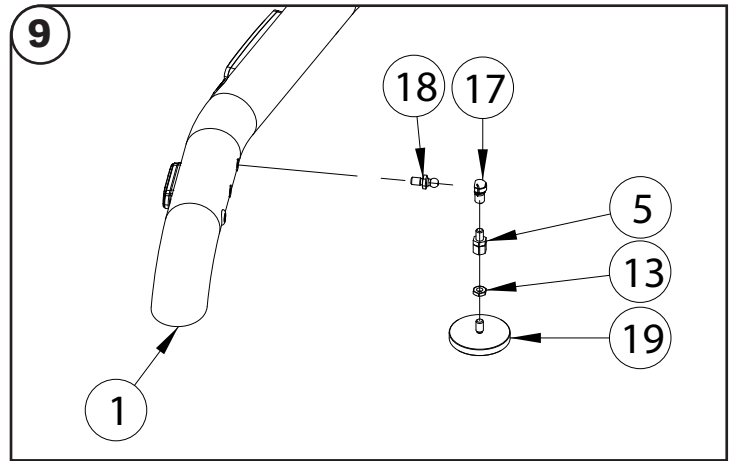
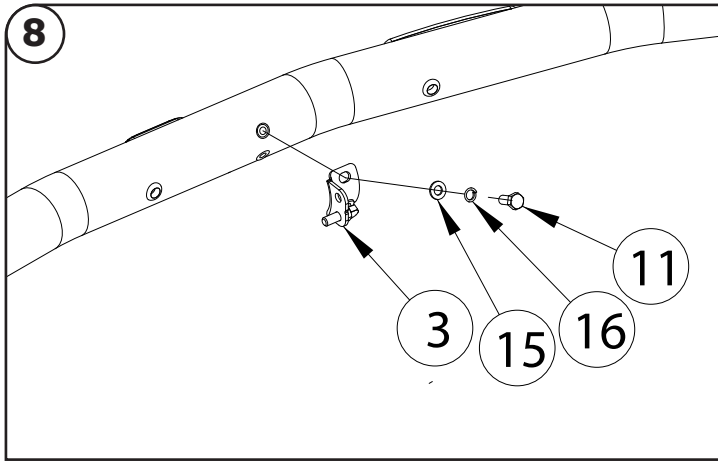
Installation of the lights must be carried out by a qualified electrician only



# Volvo EC230FL

Art. 88610470, 88610471

EuroLamp holder for counterweight



Check and retighten the fasteners:  
 Road vehicles: every 10 000km  
 Heavy machinery: every 500 work hours



Clean the product twice a month to remove dirt, salt, and debris that may cause surface discoloration or rust spots

In case of any defects or damage to the METEC product upon delivery, contact the reseller or point of sale where you made your purchase for resolution